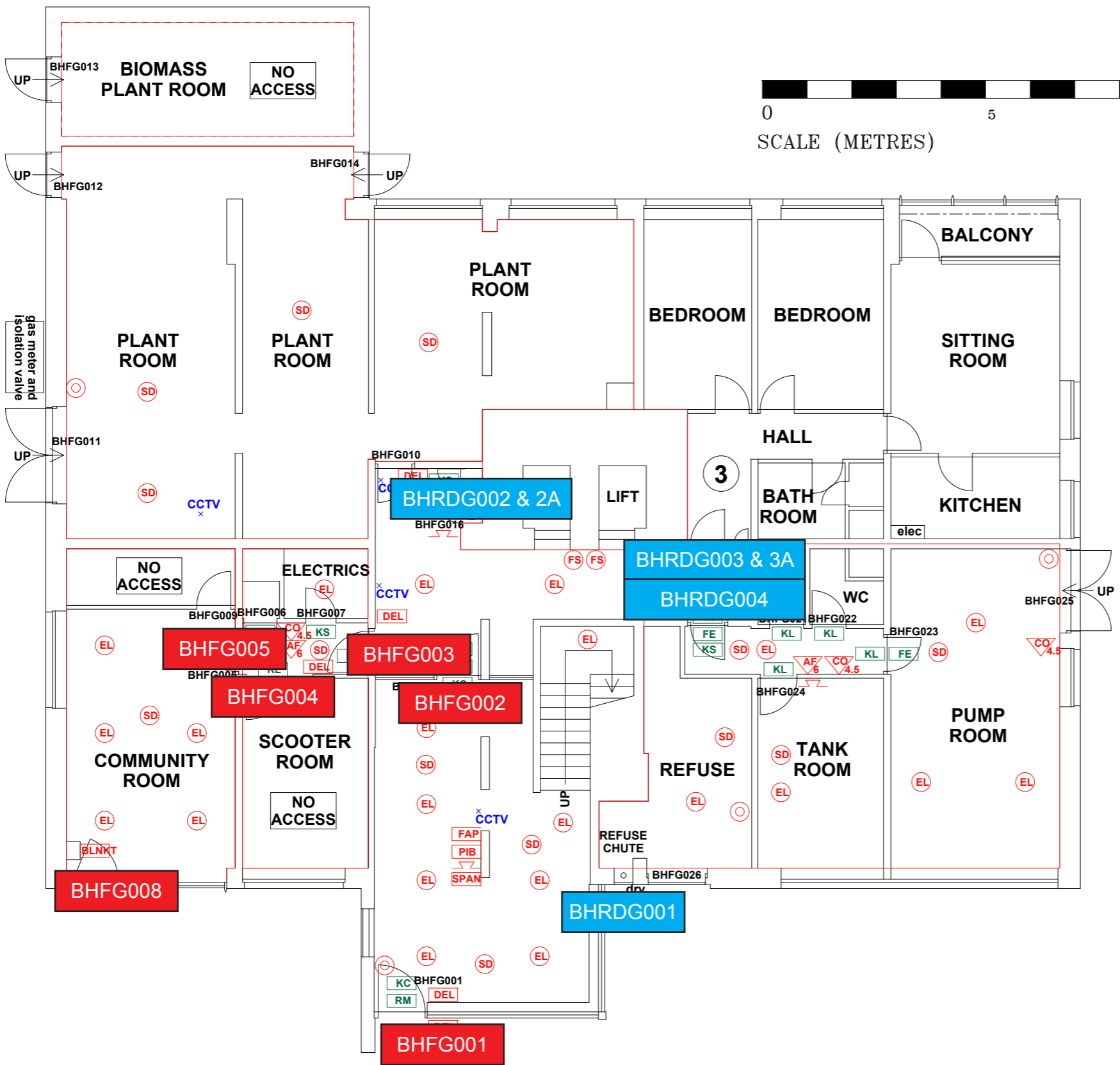
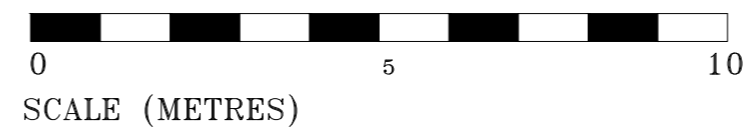


THIS DRAWING IS TO BE READ IN CONJUNCTION WITH ALL RELEVANT SPECIFICATIONS AND DRAWINGS ISSUED. THIS DRAWING IS CORRECT AT TIME OF SURVEY

© COPYRIGHT FIRNTEC LTD 2022



- FIRE PRECAUTIONS LEGEND**
- Break glass type fire alarm call point
 - ⊕ Heat sensitive detectors
 - ⊖ Smoke sensitive detectors
 - ⊙ Emergency light point.
 - ⊗ Firemans Switch
 - ⊕ Emergency Drop Key Access
 - ⊕ Fire alarm indicator / repeat panel
 - ⊕ Door/Access fitted with Gerda D1 Key lock
 - ⊕ Door/Access fitted with FB1 Key lock
 - ⊕ Door/Access fitted with FB2 Key lock
 - ⊕ Door/Access fitted with FB4 Key lock
 - ⊕ Door/Access fitted with FB11 Padlock
 - ⊕ Door/Access fitted with FB14 Padlock
 - ⊕ Dry Riser Outlet
 - ⊕ Digital electronic lock door entry/exit system
 - ⊕ Premises Information Box
 - ⊕ Permanently Open Vent
 - ⊕ Automatic Opening Vent
 - ⊕ Openable Vent
 - ⊕ Sprinkler Panel
 - ⊕ Fire alarm sounder ("X" indicates integral flashing - Xenon light)
 - ⊕ CCTV Security Camera
 - ⊕ Fire Brigade Key Access
- EXTINGUISH**
- ⊕ 1.1m x 1.1m fire blanket - base of container to be 150mm above floor level
 - ⊕ 6 litres AFFF aqueous foam extinguisher to BS:6575
 - ⊕ 9 litre wet chemical type extinguisher
 - ⊕ 4.5 litre dry powder type extinguisher
 - ⊕ 2 kg carbon dioxide type extinguisher
 - ⊕ 4.5 kg carbon dioxide type extinguisher
 - ⊕ 9 kg water type extinguisher
 - ⊕ 6 litre water type extinguisher
- FIRE EXIT SIGNAGE**
- ⊕ 'E' Signs to be externally illuminated by adjacent emergency light point
 - ⊕ 'FE' denotes as previous but illuminated as part of sign
 - ⊕ 'RM' denotes non illuminated sign
- FIRE DOOR SIGNS AND FIRE ACTION NOTICES**
- ⊕ Fire Action Notice
 - ⊕ Emergency Floor Plan
 - ⊕ "FIRE DOOR KEEP SHUT" sign
 - ⊕ "FIRE DOOR KEEP LOCKED" sign
 - ⊕ "AUTOMATIC FIRE DOOR KEEP CLEAR" or "FIRE EXIT KEEP CLEAR" sign
 - ⊕ "CAUTION, IN THE EVENT OF FIRE DO NOT USE THIS LIFT"
 - ⊕ DISTRIBUTION BOARD

- FIRE DOORS
- RISER DOORS

BENCHILL COURT

REV	DATE	AMENDMENTS

PROJECT: **BENCHILL COURT**

ADDRESS: BENCHILL COURT
WYTHENSHAW
MANCHESTER
M22 4QL

DWG NO.: BE-C_220020L01

DWG TITLE: LEVEL 0

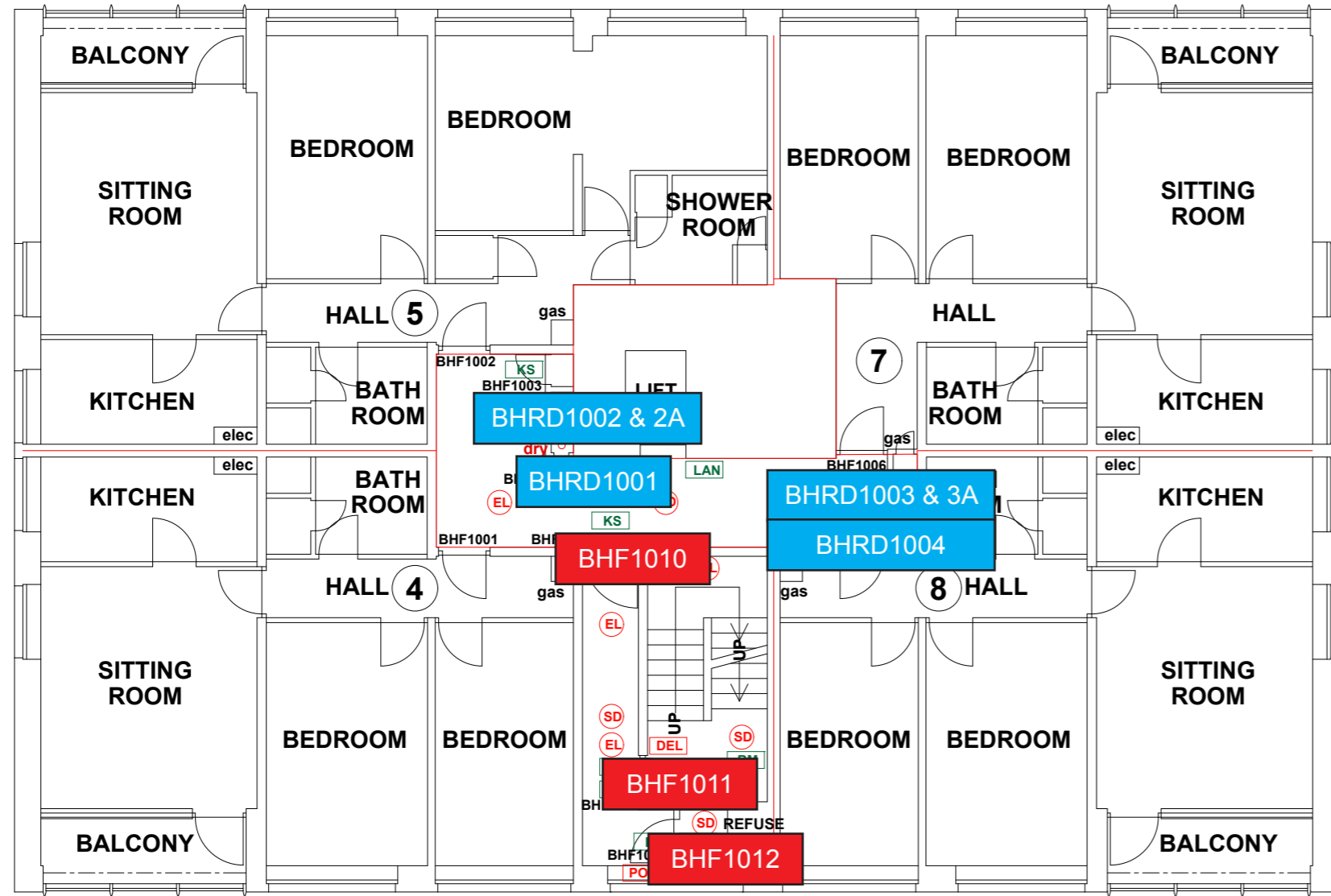
DWG DATE: NOVEMBER 2022

DWG SIZE: SCALE 1:50 @ A1

DRAWN: NR | CHECKED: BR | ISSUED

THIS DRAWING IS TO BE READ IN CONJUNCTION WITH ALL RELEVANT SPECIFICATIONS AND DRAWINGS ISSUED. THIS DRAWING IS CORRECT AT TIME OF SURVEY

© COPYRIGHT FIRNTEC LTD 2022



- FIRE PRECAUTIONS LEGEND**
- ⊙ Break glass type fire alarm call point
 - ⊙ Heat sensitive detectors
 - ⊙ Smoke sensitive detectors
 - ⊙ Emergency light point.
 - ⊙ Firemans Switch
 - ⊙ Emergency Drop Key Access
 - ⊙ Fire alarm indicator / repeat panel
 - ⊙ Door/Access fitted with Gerda D1 Key lock
 - ⊙ Door/Access fitted with FB1 Key lock
 - ⊙ Door/Access fitted with FB2 Key lock
 - ⊙ Door/Access fitted with FB4 Key lock
 - ⊙ Door/Access fitted with FB11 Padlock
 - ⊙ Door/Access fitted with FB14 Padlock
 - ⊙ Dry Riser Outlet
 - ⊙ Digital electronic lock door entry/exit system
 - ⊙ Premises Information Box
 - ⊙ Permanently Open Vent
 - ⊙ Automatic Opening Vent
 - ⊙ Openable Vent
 - ⊙ Sprinkler Panel
 - ⊙ Fire alarm sounder (*X indicates integral flashing - Xenon light)
 - ⊙ CCTV Security Camera
 - ⊙ Fire Brigade Key Access
 - EXTINGUISH
 - BLW 1.1m x 1.1m fire blanket - base of container to be 1500mm above floor level
 - 6 litres AFFF aqueous foam extinguisher to BS:6575
 - 9 litre wet chemical type extinguisher
 - 4.5 litre dry powder type extinguisher
 - 2 kg carbon dioxide type extinguisher
 - 4.5 kg carbon dioxide type extinguisher
 - 9 kg water type extinguisher
 - 6 litre water type extinguisher
 - FIRE EXIT SIGNAGE
 - E Signs to be externally illuminated by adjacent emergency light point
 - FE FE denotes as previous but illuminated as part of sign
 - RM RM denotes non illuminated sign
 - FIRE DOOR SIGNS AND FIRE ACTION NOTICES
 - FAN Fire Action Notice
 - EFP Emergency Floor Plan
 - KS "FIRE DOOR KEEP SHUT" sign
 - KL "FIRE DOOR KEEP LOCKED" sign
 - KC "AUTOMATIC FIRE DOOR KEEP CLEAR" or "FIRE EXIT KEEP CLEAR" sign
 - LAN "CAUTION, IN THE EVENT OF FIRE DO NOT USE THIS LIFT"
 - DB DISTRIBUTION BOARD

FIRE DOORS

RISER DOORS

BENCHILL COURT FIRST FLOOR

REV	DATE	AMENDMENTS

WEB: WWW.FIRNTEC.COM
EMAIL: CONTACT@FIRNTEC.COM
ADDRESS: 1ST FLOOR, ENDEAVOUR HOUSE, PARKWAY CT, PLYMOUTH PL6 8LR
TEL: 01752 877 147

PROJECT: BENCHILL COURT
ADDRESS: BENCHILL COURT, WITTHENSHAW, MANCHESTER, M22 4QL
DWG NO.: BE-C_220020_L02
DWG TITLE: LEVEL 1
DWG DATE: NOVEMBER 2022
DWG SIZE: SCALE 1:50 @ A1
DRAWN: NR | CHECKED: BR | FILE

THIS DRAWING IS TO BE READ IN CONJUNCTION WITH ALL RELEVANT SPECIFICATIONS AND DRAWINGS ISSUED. THIS DRAWING IS CORRECT AT TIME OF SURVEY

© COPYRIGHT FIRNTEC LTD 2022



- FIRE PRECAUTIONS LEGEND**
- Break glass type fire alarm call point
 - Heat sensitive detectors
 - Smoke sensitive detectors
 - Emergency light point.
 - Firemans Switch
 - Emergency Drop Key Access
 - Fire alarm indicator / repeat panel
 - Door/Access fitted with Gerda D1 Key lock
 - Door/Access fitted with FB1 Key lock
 - Door/Access fitted with FB2 Key lock
 - Door/Access fitted with FB4 Key lock
 - Door/Access fitted with FB11 Padlock
 - Door/Access fitted with FB14 Padlock
 - Dry Riser Outlet
 - Digital electronic lock door entry/exit system
 - Premises Information Box
 - Permanently Open Vent
 - Automatic Opening Vent
 - Openable Vent
 - Sprinkler Panel
 - Fire alarm sounder ('X' indicates integral flashing - Xenon light)
 - CCTV Security Camera
 - Fire Brigade Key Access
 - EXTINGUISH**
 - 1.1m x 1.1m fire blanket - base of container to be 1500mm above floor level
 - 6 litres AFFF aqueous foam extinguisher to BS:6575
 - 9 litre wet chemical type extinguisher
 - 4.5 litre dry powder type extinguisher
 - 2 kg carbon dioxide type extinguisher
 - 4.5 kg carbon dioxide type extinguisher
 - 9 kg water type extinguisher
 - 6 litre water type extinguisher
 - FIRE EXIT SIGNAGE**
 - 'E' Signs to be externally illuminated by adjacent emergency light point
 - 'FE' denotes as previous but illuminated as part of sign symbol/>'FE' denotes as previous but illuminated as part of sign
 - 'RM' denotes non illuminated sign symbol/>'RM' denotes non illuminated sign
 - FIRE DOOR SIGNS AND FIRE ACTION NOTICES**
 - Fire Action Notice
 - Emergency Floor Plan
 - 'FIRE DOOR KEEP SHUT' sign symbol/>'FIRE DOOR KEEP SHUT' sign
 - 'FIRE DOOR KEEP LOCKED' sign symbol/>'FIRE DOOR KEEP LOCKED' sign
 - 'AUTOMATIC FIRE DOOR KEEP CLEAR' or 'FIRE EXIT KEEP CLEAR' sign symbol/>'AUTOMATIC FIRE DOOR KEEP CLEAR' or 'FIRE EXIT KEEP CLEAR' sign
 - 'CAUTION, IN THE EVENT OF FIRE DO NOT USE THIS LIFT' symbol/>'CAUTION, IN THE EVENT OF FIRE DO NOT USE THIS LIFT'
 - DISTRIBUTION BOARD

- FIRE DOORS
- RISER DOORS

BENCHILL COURT SECOND FLOOR

REV	DATE	AMENDMENTS

PROJECT: BENCHILL COURT

ADDRESS: BENCHILL COURT
WITHENSHAW
MANCHESTER
M22 4QL

DWG NO.: BE-C_220020_L03

DWG TITLE: LEVEL 2

DWG DATE: NOVEMBER 2022

DWG SIZE: SCALE 1:50 @ A1

DRAWN: NR | CHECKED: BR | DATE:

WEB: WWW.FIRNTEC.COM
 EMAIL: CONTACTUS@FIRNTEC.COM
 ADDRESS: 1ST FLOOR, ENDEAVOUR HOUSE, PARKWAY CT, PLYMOUTH PL6 8LR
 TEL: 01752 977 147

THIS DRAWING IS TO BE READ IN CONJUNCTION WITH ALL RELEVANT SPECIFICATIONS AND DRAWINGS ISSUED. THIS DRAWING IS CORRECT AT TIME OF SURVEY.

© COPYRIGHT FIRNTEC LTD 2022



- FIRE PRECAUTIONS LEGEND**
- Break glass type fire alarm call point
 - Heat sensitive detectors
 - Smoke sensitive detectors
 - Emergency light point
 - Firemans Switch
 - Emergency Drop Key Access
 - Fire alarm indicator / repeat panel
 - Door/Access fitted with Gerda D1 Key lock
 - Door/Access fitted with FB1 Key lock
 - Door/Access fitted with FB2 Key lock
 - Door/Access fitted with FB4 Key lock
 - Door/Access fitted with FB11 Padlock
 - Door/Access fitted with FB14 Padlock
 - Dry Riser Outlet
 - Digital electronic lock door entry/exit system
 - Premises Information Box
 - Permanently Open Vent
 - Automatic Opening Vent
 - Openable Vent
 - Sprinkler Panel
 - Fire alarm sounder ('X' indicates integral flashing - Xenon light)
 - CCTV Security Camera
 - Fire Brigade Key Access
- EXTINGUISH**
- 1.1m x 1.1m fire blanket - base of container to be 1500mm above floor level
 - 6 litres AFFF aqueous foam extinguisher to BS:6575
 - 9 litre wet chemical type extinguisher
 - 4.5 litre dry powder type extinguisher
 - 2 kg carbon dioxide type extinguisher
 - 4.5 kg carbon dioxide type extinguisher
 - 9 kg water type extinguisher
 - 6 litre water type extinguisher
- FIRE EXIT SIGNAGE**
- 'E' Signs to be externally illuminated by adjacent emergency light point
 - 'FE' denotes as previous but illuminated as part of sign
 - 'RM' denotes non illuminated sign
- FIRE DOOR SIGNS AND FIRE ACTION NOTICES**
- Fire Action Notice
 - Emergency Floor Plan
 - "FIRE DOOR KEEP SHUT" sign
 - "FIRE DOOR KEEP LOCKED" sign
 - "AUTOMATIC FIRE DOOR KEEP CLEAR" or "FIRE EXIT KEEP CLEAR" sign
 - "CAUTION, IN THE EVENT OF FIRE DO NOT USE THIS LIFT"
 - DISTRIBUTION BOARD

FIRE DOORS

RISER DOORS

BENCHILL COURT THIRD FLOOR

REV	DATE	AMENDMENTS

WEB: WWW.FIRNTEC.COM
EMAIL: CONTACTUS@FIRNTEC.COM
ADDRESS: 1ST FLOOR, BRIDGEFOUR HOUSE, PARKWAY CT, PLYMOUTH PL4 8LR
TEL: 01752 977 147

PROJECT: BENCHILL COURT

ADDRESS: BENCHILL COURT
WYTHENSHAW
MANCHESTER
M22 4QL

DWG NO.: BE-C_220020_L04
DWG TITLE: LEVEL 3
DWG DATE: NOVEMBER 2022
DWG SIZE: SCALE 1:50 @ A1
DRAWN: NR | CHECKED: BR

THIS DRAWING IS TO BE READ IN CONJUNCTION WITH ALL RELEVANT SPECIFICATIONS AND DRAWINGS ISSUED. THIS DRAWING IS CORRECT AT TIME OF SURVEY

© COPYRIGHT FIRNTEC LTD 2022



- FIRE PRECAUTIONS LEGEND**
- Break glass type fire alarm call point
 - Heat sensitive detectors
 - Smoke sensitive detectors
 - Emergency light point.
 - Firemans Switch
 - Emergency Drop Key Access
 - Fire alarm indicator / repeat panel
 - Door/Access fitted with Gerda D1 Key lock
 - Door/Access fitted with FB1 Key lock
 - Door/Access fitted with FB2 Key lock
 - Door/Access fitted with FB4 Key lock
 - Door/Access fitted with FB11 Padlock
 - Door/Access fitted with FB14 Padlock
 - Dry Riser Outlet
 - Digital electronic lock door entry/exit system
 - Premises Information Box
 - Permanently Open Vent
 - Automatic Opening Vent
 - Openable Vent
 - Sprinkler Panel
 - Fire alarm sounder ('X' indicates integral flashing - Xenon light)
 - CCTV Security Camera
 - Fire Brigade Key Access
 - EXTINGUISH**
 - 1.1m x 1.1m fire blanket - base of container to be 1500mm above floor level
 - 6 litres AFFF aqueous foam extinguisher to BS:6575
 - 9 litre wet chemical type extinguisher
 - 4.5 litre dry powder type extinguisher
 - 2 kg carbon dioxide type extinguisher
 - 4.5 kg carbon dioxide type extinguisher
 - 9 kg water type extinguisher
 - 6 litre water type extinguisher
 - FIRE EXIT SIGNAGE**
 - 'E' Signs to be externally illuminated by adjacent emergency light point
 - 'FE' denotes as previous but illuminated as part of sign
 - 'RM' denotes non illuminated sign
 - FIRE DOOR SIGNS AND FIRE ACTION NOTICES**
 - Fire Action Notice
 - Emergency Floor Plan
 - "FIRE DOOR KEEP SHUT" sign
 - "FIRE DOOR KEEP LOCKED" sign
 - "AUTOMATIC FIRE DOOR KEEP CLEAR" or "FIRE EXIT KEEP CLEAR" sign
 - "CAUTION, IN THE EVENT OF FIRE DO NOT USE THIS LIFT"
 - DISTRIBUTION BOARD

FIRE DOORS

RISER DOORS

BENCHILL COURT FOURTH FLOOR

REV	DATE	AMENDMENTS

PROJECT: BENCHILL COURT

ADDRESS: BENCHILL COURT
WYTHENSHAW
MANCHESTER
M22 4JL

DWG NO.: BE-C-220201_05

DWG DATE: NOVEMBER 2022

DWG TITLE: LEVEL 4

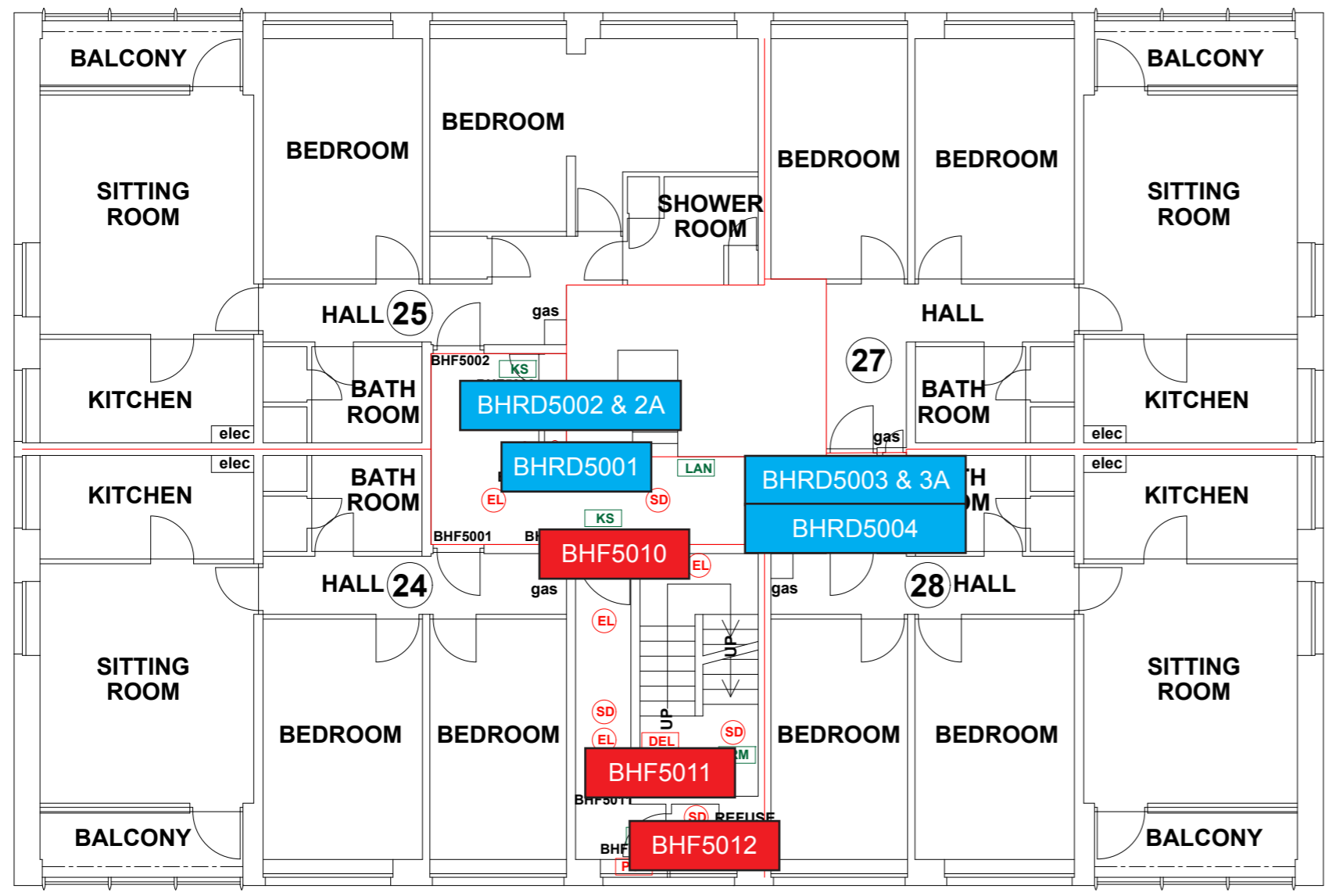
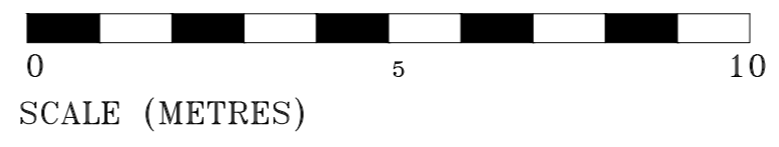
DWG SIZE: SCALE 1:50 @ A1

TEL: 01752 971 147

DRAWN: NR | CHECKED: BR | 05/4

THIS DRAWING IS TO BE READ IN CONJUNCTION WITH ALL RELEVANT SPECIFICATIONS AND DRAWINGS ISSUED. THIS DRAWING IS CORRECT AT TIME OF SURVEY.

© COPYRIGHT FIRNTEC LTD 2022



- FIRE PRECAUTIONS LEGEND**
- Break glass type fire alarm call point
 - Heat sensitive detectors
 - Smoke sensitive detectors
 - Emergency light point.
 - Firemans Switch
 - Emergency Drop Key Access
 - Fire alarm indicator / repeat panel
 - Door/Access fitted with Gerda D1 Key lock
 - Door/Access fitted with FB1 Key lock
 - Door/Access fitted with FB2 Key lock
 - Door/Access fitted with FB4 Key lock
 - Door/Access fitted with FB11 Padlock
 - Door/Access fitted with FB14 Padlock
 - Dry Riser Outlet
 - Digital electronic lock door entry/exit system
 - Premises Information Box
 - Permanently Open Vent
 - Automatic Opening Vent
 - Openable Vent
 - Sprinkler Panel
 - Fire alarm sounder ('X' indicates integral flashing - Xenon light)
 - CCTV Security Camera
 - Fire Brigade Key Access
- EXTINGUISH**
- 1.1m x 1.1m fire blanket - base of container to be 150mm above floor level
 - 6 litres AFFF aqueous foam extinguisher to BS:6575
 - 9 litre wet chemical type extinguisher
 - 4.5 litre dry powder type extinguisher
 - 2 kg carbon dioxide type extinguisher
 - 4.5 kg carbon dioxide type extinguisher
 - 9 kg water type extinguisher
 - 6 litre water type extinguisher
- FIRE EXIT SIGNAGE**
- 'E' Signs to be externally illuminated by adjacent emergency light point
 - 'FE' denotes as previous but illuminated as part of sign
 - 'RM' denotes non illuminated sign
- FIRE DOOR SIGNS AND FIRE ACTION NOTICES**
- Fire Action Notice
 - Emergency Floor Plan
 - "FIRE DOOR KEEP SHUT" sign
 - "FIRE DOOR KEEP LOCKED" sign
 - "AUTOMATIC FIRE DOOR KEEP CLEAR" or "FIRE EXIT KEEP CLEAR" sign
 - "CAUTION, IN THE EVENT OF FIRE DO NOT USE THIS LIFT"
 - DISTRIBUTION BOARD

- FIRE DOORS
- RISER DOORS

BENCHILL COURT FIFTH FLOOR

REV	DATE	AMENDMENTS

PROJECT: **BENCHILL COURT**

ADDRESS: BENCHILL COURT
WYTHENSHAW
MANCHESTER
M22 4QL

DWG NO.: BE-C-2200201_06

DWG TITLE: LEVEL 5

DWG DATE: NOVEMBER 2022

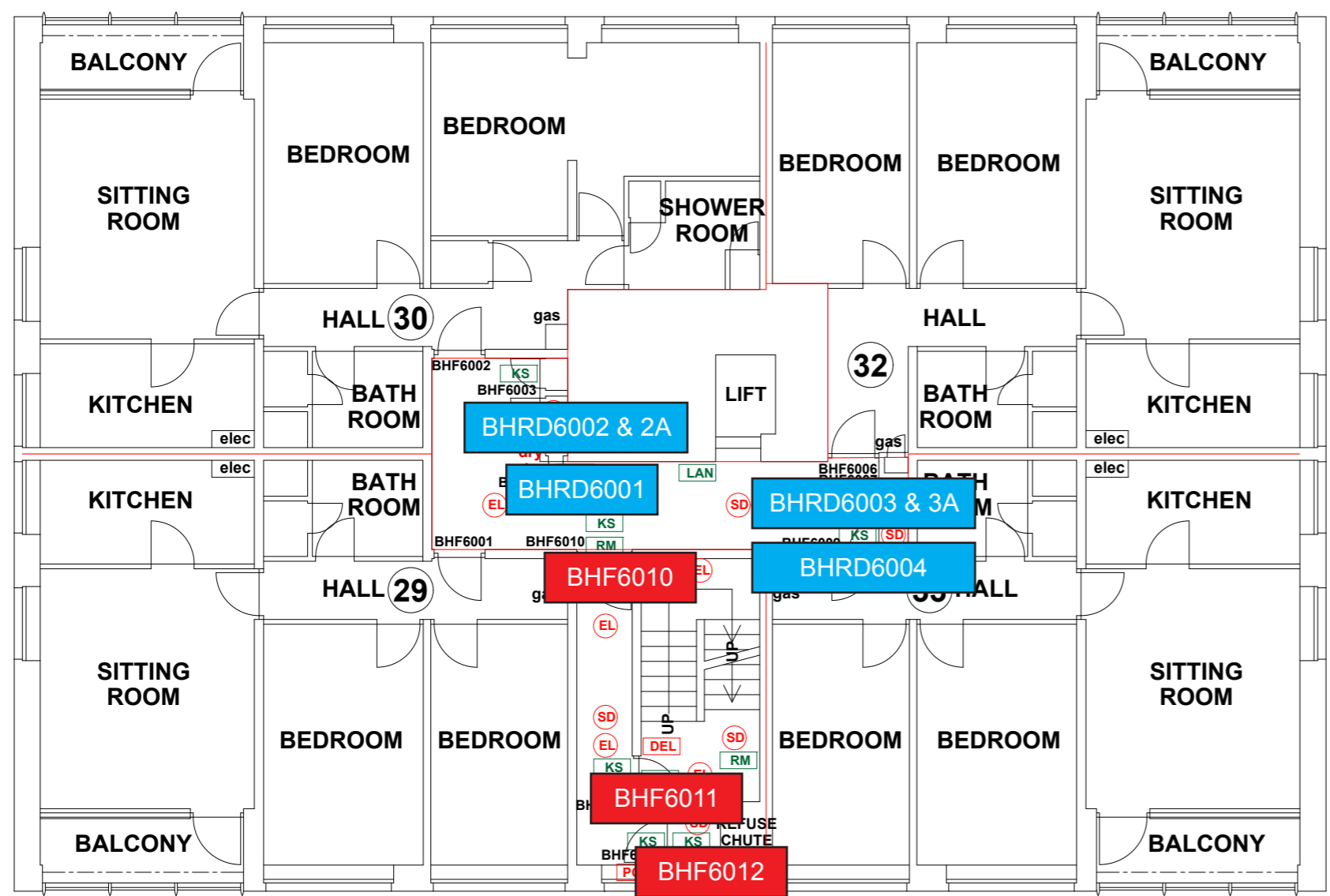
DWG SIZE: SCALE 1:50 @ A1

DRAWN: NR | CHECKED: BR | ISSUE

WEB: WWW.FIRNTEC.COM
EMAIL: CONTACTUS@FIRNTEC.COM
ADDRESS: 1ST FLOOR, ENDEAVOUR HOUSE, PARKWAY CT, PLYMOUTH PL6 6LR
TEL: 01752 977 147

THIS DRAWING IS TO BE READ IN CONJUNCTION WITH ALL RELEVANT SPECIFICATIONS AND DRAWINGS ISSUED. THIS DRAWING IS CORRECT AT TIME OF SURVEY.

© COPYRIGHT FIRNTEC LTD 2022



- FIRE PRECAUTIONS LEGEND**
- Break glass type fire alarm call point
 - Heat sensitive detectors
 - Smoke sensitive detectors
 - Emergency light point.
 - Firemans Switch
 - Emergency Drop Key Access
 - Fire alarm indicator / repeat panel
 - Door/Access fitted with Gerda D1 Key lock
 - Door/Access fitted with FB1 Key lock
 - Door/Access fitted with FB2 Key lock
 - Door/Access fitted with FB4 Key lock
 - Door/Access fitted with FB11 Padlock
 - Door/Access fitted with FB14 Padlock
 - Dry Riser Outlet
 - Digital electronic lock door entry/exit system
 - Premises Information Box
 - Permanently Open Vent
 - Automatic Opening Vent
 - Openable Vent
 - Sprinkler Panel
 - Fire alarm sounder ('X' indicates integral flashing - Xenon light)
 - CCTV Security Camera
 - Fire Brigade Key Access
- EXTINGUISH**
- 1.1m x 1.1m fire blanket - base of container to be 1500mm above floor level
 - 6 litres AFFF aqueous foam extinguisher to BS:6575
 - 9 litre wet chemical type extinguisher
 - 4.5 litre dry powder type extinguisher
 - 2 kg carbon dioxide type extinguisher
 - 4.5 kg carbon dioxide type extinguisher
 - 9 kg water type extinguisher
 - 6 litre water type extinguisher
- FIRE EXIT SIGNAGE**
- 'E' Signs to be externally illuminated by adjacent emergency light point
 - 'FE' denotes as previous but illuminated as part of sign
 - 'RM' denotes non illuminated sign
- FIRE DOOR SIGNS AND FIRE ACTION NOTICES**
- Fire Action Notice
 - Emergency Floor Plan
 - "FIRE DOOR KEEP SHUT" sign
 - "FIRE DOOR KEEP LOCKED" sign
 - "AUTOMATIC FIRE DOOR KEEP CLEAR" or "FIRE EXIT KEEP CLEAR" sign
 - "CAUTION, IN THE EVENT OF FIRE DO NOT USE THIS LIFT"
 - DISTRIBUTION BOARD

FIRE DOORS

RISER DOORS

BENCHILL COURT SIXTH FLOOR

REV	DATE	AMENDMENTS

FIRNTEC
BUILDING COMPLIANCE

PROJECT: BENCHILL COURT
ADDRESS: BENCHILL COURT
WYTHENSHAW
MANCHESTER
M22 4QL

DWG NO.: BE-C_220020L_07
DWG TITLE: LEVEL 6
DWG DATE: NOVEMBER 2022
DWG SIZE: SCALE 1:50 @ A1
DRAWN: NR | CHECKED: BR

WEB: WWW.FIRNTEC.COM
EMAIL: CONTACT@FIRNTEC.COM
ADDRESS: 1ST FLOOR, BRIDGEVAULT HOUSE,
PARKWAY CT, PLYMOUTH PL4 8LR
TEL: 01752 977 147

THIS DRAWING IS TO BE READ IN CONJUNCTION WITH ALL RELEVANT SPECIFICATIONS AND DRAWINGS ISSUED. THIS DRAWING IS CORRECT AT TIME OF SURVEY.

© COPYRIGHT FIRNTEC LTD 2022



- FIRE PRECAUTIONS LEGEND**
- Break glass type fire alarm call point
 - Heat sensitive detectors
 - Smoke sensitive detectors
 - Emergency light point.
 - Firemans Switch
 - Emergency Drop Key Access
 - Fire alarm indicator / repeat panel
 - Door/Access fitted with Gerda D1 Key lock
 - Door/Access fitted with FB1 Key lock
 - Door/Access fitted with FB2 Key lock
 - Door/Access fitted with FB4 Key lock
 - Door/Access fitted with FB11 Padlock
 - Door/Access fitted with FB14 Padlock
 - Dry Riser Outlet
 - Digital electronic lock door entry/exit system
 - Premises Information Box
 - Permanently Open Vent
 - Automatic Opening Vent
 - Openable Vent
 - Sprinkler Panel
 - Fire alarm sounder ('X' indicates integral flashing - Xenon light)
 - CCTV Security Camera
 - Fire Brigade Key Access
- EXTINGUISH**
- 1.1m x 1.1m fire blanket - base of container to be 1500mm above floor level
 - 6 litres AFFF aqueous foam extinguisher to BS:6875
 - 9 litre wet chemical type extinguisher
 - 4.5 litre dry powder type extinguisher
 - 2 kg carbon dioxide type extinguisher
 - 4.5 kg carbon dioxide type extinguisher
 - 9 kg water type extinguisher
 - 6 litre water type extinguisher
- FIRE EXIT SIGNAGE**
- 'E' Signs to be externally illuminated by adjacent emergency light point
 - 'FE' denotes as previous but illuminated as part of sign
 - 'RM' denotes non illuminated sign
- FIRE DOOR SIGNS AND FIRE ACTION NOTICES**
- Fire Action Notice
 - Emergency Floor Plan
 - "FIRE DOOR KEEP SHUT" sign
 - "FIRE DOOR KEEP LOCKED" sign
 - "AUTOMATIC FIRE DOOR KEEP CLEAR" or "FIRE EXIT KEEP CLEAR" sign
 - "CAUTION, IN THE EVENT OF FIRE DO NOT USE THIS LIFT"
 - DISTRIBUTION BOARD

FIRE DOORS

RISER DOORS

BENCHILL COURT SEVENTH FLOOR

REV	DATE	AMENDMENTS

PROJECT: BENCHILL COURT

ADDRESS: BENCHILL COURT
WYTHENSHAW
MANCHESTER
M22 4QL

DWG NO.: BE-C-220020_L08

DWG TITLE: LEVEL 7

DWG DATE: NOVEMBER 2022

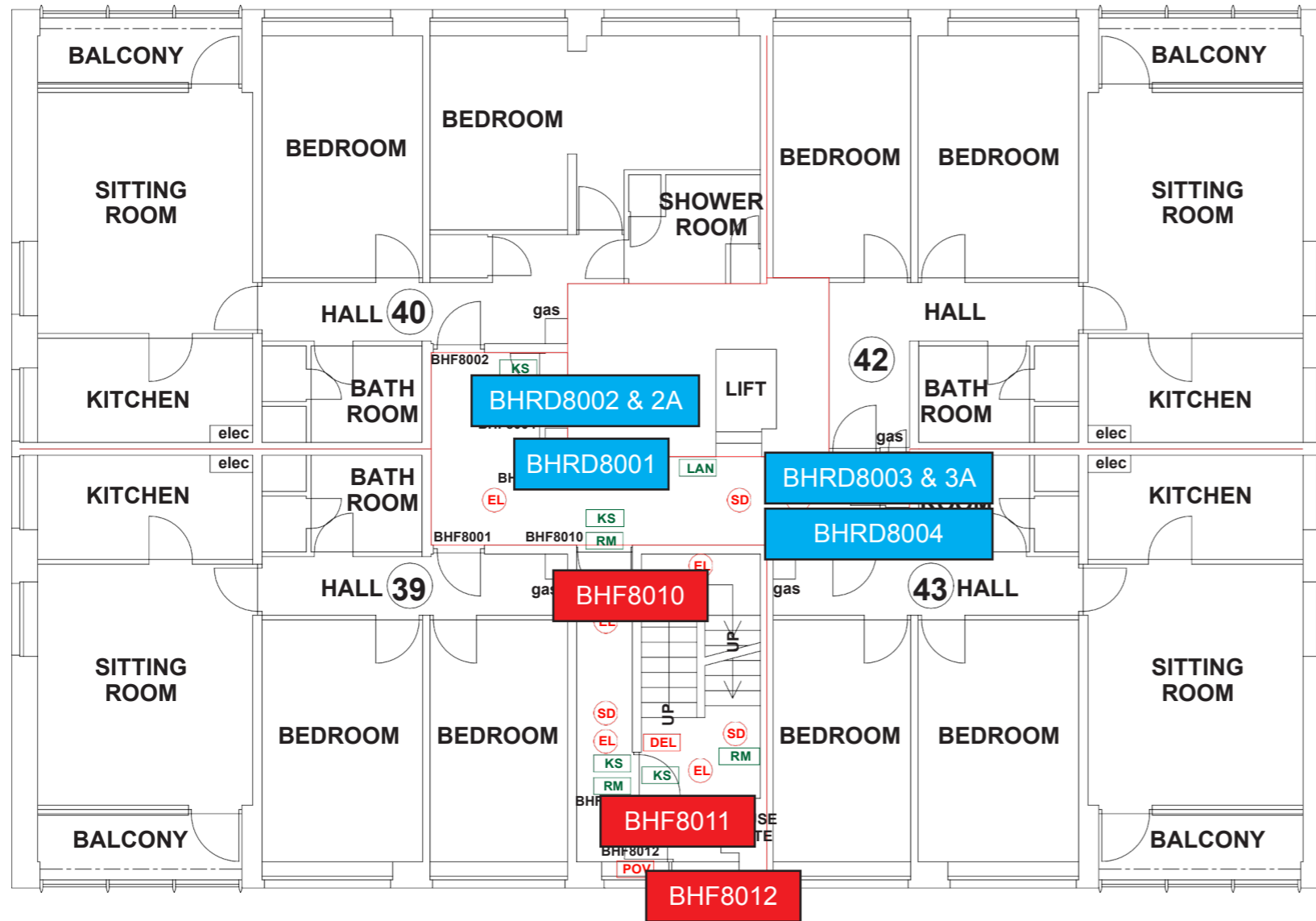
DWG SIZE: SCALE 1:50 @ A1

DRAWN: NR | CHECKED: BR

WEB: WWW.FIRNTEC.COM
EMAIL: CONTACTUS@FIRNTEC.COM
ADDRESS: 1ST FLOOR, ENDEAVOUR HOUSE, PARKWAY CT, FLYMOOR, PL4 6LR
TEL: 01753 977 147

THIS DRAWING IS TO BE READ IN CONJUNCTION WITH ALL RELEVANT SPECIFICATIONS AND DRAWINGS ISSUED. THIS DRAWING IS CORRECT AT TIME OF SURVEY

© COPYRIGHT FIRNTEC LTD 2022



- FIRE PRECAUTIONS LEGEND**
- Break glass type fire alarm call point
 - Heat sensitive detectors
 - Smoke sensitive detectors
 - Emergency light point.
 - Firemans Switch
 - Emergency Drop Key Access
 - Fire alarm indicator / repeat panel
 - Door/Access fitted with Gerda D1 Key lock
 - Door/Access fitted with FB1 Key lock
 - Door/Access fitted with FB2 Key lock
 - Door/Access fitted with FB4 Key lock
 - Door/Access fitted with FB11 Padlock
 - Door/Access fitted with FB14 Padlock
 - Dry Riser Outlet
 - Digital electronic lock door entry/exit system
 - Premises Information Box
 - Permanently Open Vent
 - Automatic Opening Vent
 - Openable Vent
 - Sprinkler Panel
 - Fire alarm sounder ('X' indicates integral flashing - Xenon light)
 - CCTV Security Camera
 - Fire Brigade Key Access
- EXTINGUISH**
- 1.1m x 1.1m fire blanket - base of container to be 1500mm above floor level
 - 6 litres AFFF aqueous foam extinguisher to BS:6575
 - 9 litre wet chemical type extinguisher
 - 4.5 litre dry powder type extinguisher
 - 2 kg carbon dioxide type extinguisher
 - 4.5 kg carbon dioxide type extinguisher
 - 9 kg water type extinguisher
 - 6 litre water type extinguisher
- FIRE EXIT SIGNAGE**
- 'E' Signs to be externally illuminated by adjacent emergency light point
 - 'FE' denotes as previous but illuminated as part of sign
 - 'RM' denotes non illuminated sign
- FIRE DOOR SIGNS AND FIRE ACTION NOTICES**
- Fire Action Notice
 - Emergency Floor Plan
 - "FIRE DOOR KEEP SHUT" sign
 - "FIRE DOOR KEEP LOCKED" sign
 - "AUTOMATIC FIRE DOOR KEEP CLEAR" or "FIRE EXIT KEEP CLEAR" sign
 - "CAUTION, IN THE EVENT OF FIRE DO NOT USE THIS LIFT"
 - DISTRIBUTION BOARD

FIRE DOORS

RISER DOORS

BENCHILL COURT EIGHTH FLOOR

REV	DATE	AMENDMENTS

PROJECT: BENCHILL COURT

ADDRESS: BENCHILL COURT
WYTHENSHAW
MANCHESTER
M22 4QL

DWG NO.: BE-C_220201_09

DWG TITLE: LEVEL 8

DWG DATE: NOVEMBER 2022

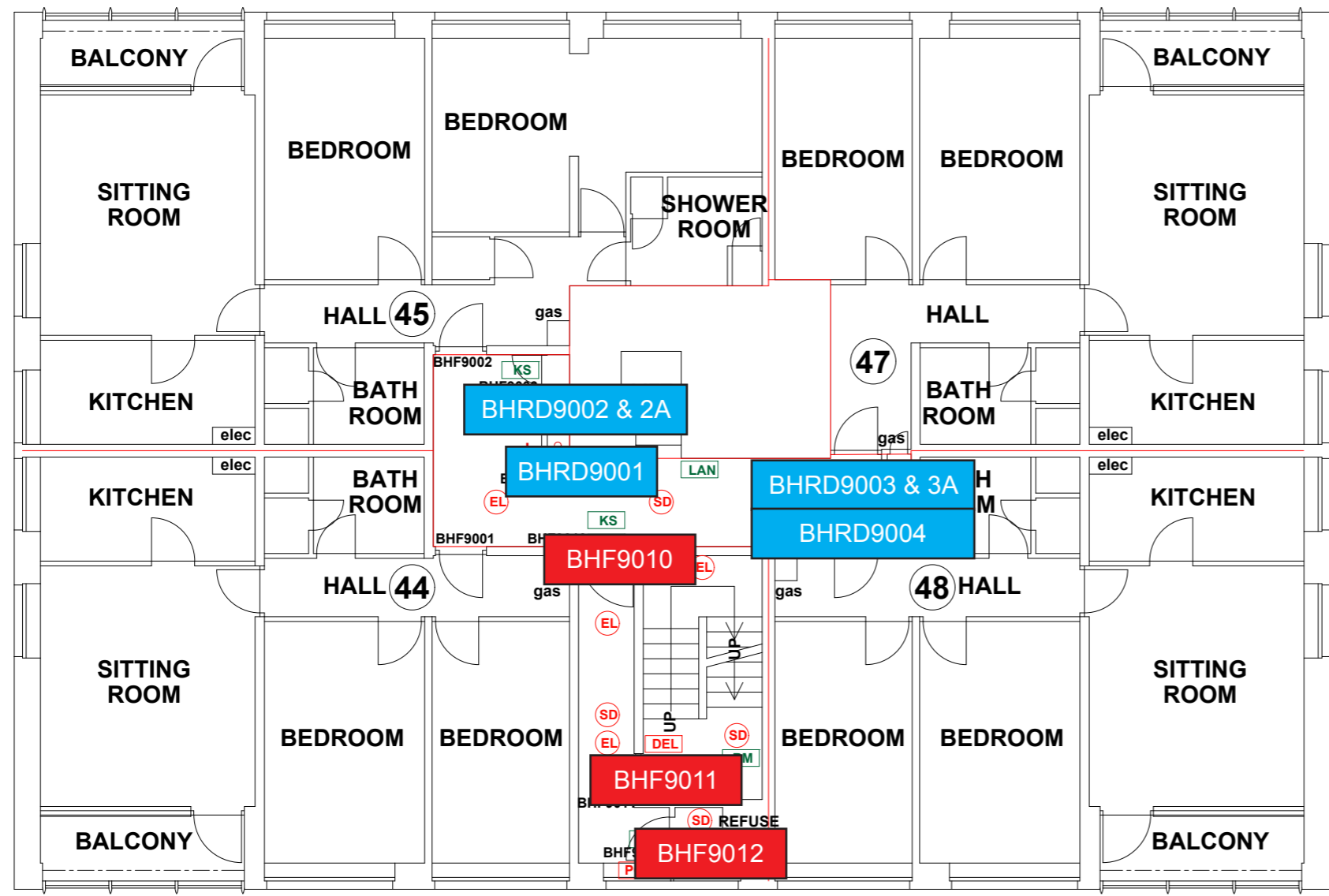
DWG SIZE: SCALE 1:50 @ A1

DRAWN: NR CHECKED: BR ISSUE:

WEB: WWW.FIRNTEC.COM
EMAIL: CONTACT@FIRNTEC.COM
ADDRESS: 1ST FLOOR, ENDEAVOUR HOUSE,
FAIRWAY CT, PLIMMOUTH PL 6LR
TEL: 01752 972 147

THIS DRAWING IS TO BE READ IN CONJUNCTION WITH ALL RELEVANT SPECIFICATIONS AND DRAWINGS ISSUED. THIS DRAWING IS CORRECT AT TIME OF SURVEY.

© COPYRIGHT FIRNTEC LTD 2022



- FIRE PRECAUTIONS LEGEND**
- Break glass type fire alarm call point
 - Heat sensitive detectors
 - Smoke sensitive detectors
 - Emergency light point.
 - Firemans Switch
 - Emergency Drop Key Access
 - Fire alarm indicator / repeat panel
 - Door/Access fitted with Gerda D1 Key lock
 - Door/Access fitted with FB1 Key lock
 - Door/Access fitted with FB2 Key lock
 - Door/Access fitted with FB4 Key lock
 - Door/Access fitted with FB11 Padlock
 - Door/Access fitted with FB14 Padlock
 - Dry Riser Outlet
 - Digital electronic lock door entry/exit system
 - Premises Information Box
 - Permanently Open Vent
 - Automatic Opening Vent
 - Openable Vent
 - Sprinkler Panel
 - Fire alarm sounder ('X' indicates integral flashing - Xenon light)
 - CCTV Security Camera
 - Fire Brigade Key Access
- EXTINGUISH**
- 1.1m x 1.1m fire blanket - base of container to be 1500mm above floor level
 - 6 litres AFFF aqueous foam extinguisher to BS-6575
 - 9 litre wet chemical type extinguisher
 - 4.5 litre dry powder type extinguisher
 - 2 kg carbon dioxide type extinguisher
 - 4.5 kg carbon dioxide type extinguisher
 - 9 kg water type extinguisher
 - 6 litre water type extinguisher
- FIRE EXIT SIGNAGE**
- 'E' Signs to be externally illuminated by adjacent emergency light point
 - 'FE' denotes as previous but illuminated as part of sign
 - 'RM' denotes non illuminated sign
- FIRE DOOR SIGNS AND FIRE ACTION NOTICES**
- Fire Action Notice
 - Emergency Floor Plan
 - "FIRE DOOR KEEP SHUT" sign
 - "FIRE DOOR KEEP LOCKED" sign
 - "AUTOMATIC FIRE DOOR KEEP CLEAR" or "FIRE EXIT KEEP CLEAR" sign
 - "CAUTION, IN THE EVENT OF FIRE DO NOT USE THIS LIFT"
 - DISTRIBUTION BOARD

FIRE DOORS

RISER DOORS

BENCHILL COURT NINTH FLOOR

REV	DATE	AMENDMENTS

PROJECT: BENCHILL COURT

ADDRESS: BENCHILL COURT
WYTHENSHAW
MANCHESTER
M22 4GL

DWG NO.: BE-C_22020L10

DWG TITLE: LEVEL 9

DWG DATE: NOVEMBER 2022

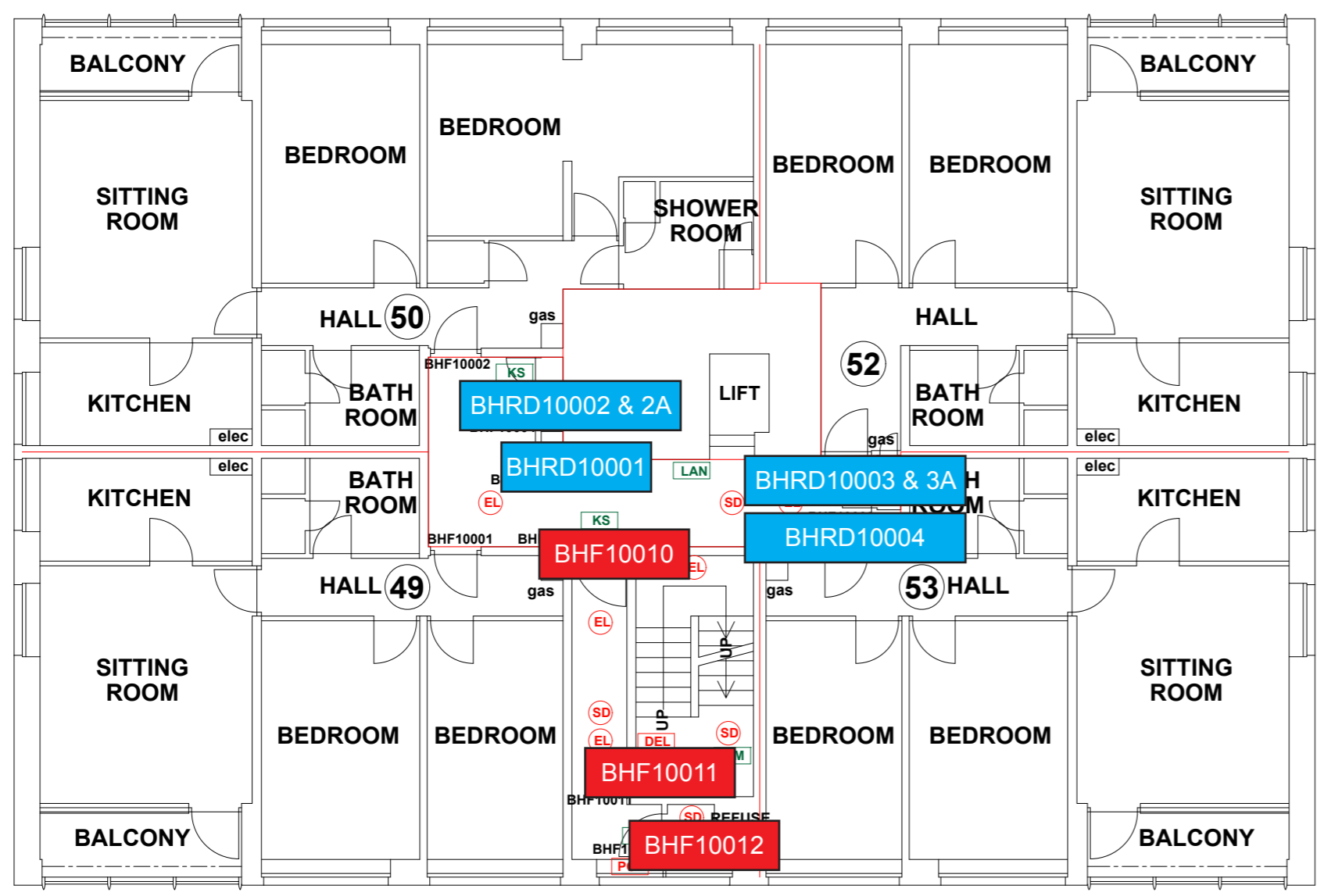
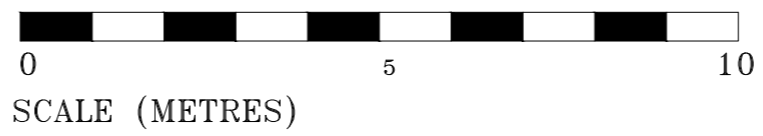
DWG SIZE: SCALE 1:50 @ A1

DRAWN: NR | CHECKED: BR

WEB: WWW.FIRNTEC.COM
 EMAIL: CONTACTUS@FIRNTEC.COM
 ADDRESS: 1ST FLOOR, ENDEAVOUR HOUSE,
 PARKWAY CT, PLYMOUTH PL5 8LR
 TEL: 01752 977 147

THIS DRAWING IS TO BE READ IN CONJUNCTION WITH ALL RELEVANT SPECIFICATIONS AND DRAWINGS ISSUED. THIS DRAWING IS CORRECT AT TIME OF SURVEY

© COPYRIGHT FIRNTEC LTD 2022



- FIRE PRECAUTIONS LEGEND**
- Break glass type fire alarm call point
 - Heat sensitive detectors
 - Smoke sensitive detectors
 - Emergency light point.
 - Firemans Switch
 - Emergency Drop Key Access
 - Fire alarm indicator / repeat panel
 - Door/Access fitted with Gerda D1 Key lock
 - Door/Access fitted with FB1 Key lock
 - Door/Access fitted with FB2 Key lock
 - Door/Access fitted with FB4 Key lock
 - Door/Access fitted with FB11 Padlock
 - Door/Access fitted with FB14 Padlock
 - Dry Riser Outlet
 - Digital electronic lock door entry/exit system
 - Premises Information Box
 - Permanently Open Vent
 - Automatic Opening Vent
 - Openable Vent
 - Sprinkler Panel
 - Fire alarm sounder ('X' indicates integral flashing - Xenon light)
 - CCTV Security Camera
 - Fire Brigade Key Access
- EXTINGUISH**
- 1.1m x 1.1m fire blanket - base of container to be 1500mm above floor level
 - 6 litres AFFF aqueous foam extinguisher to BS:6575
 - 9 litre wet chemical type extinguisher
 - 4.5 litre dry powder type extinguisher
 - 2 kg carbon dioxide type extinguisher
 - 4.5 kg carbon dioxide type extinguisher
 - 9 kg water type extinguisher
 - 6 litre water type extinguisher
- FIRE EXIT SIGNAGE**
- 'E' Signs to be externally illuminated by adjacent emergency light point
 - 'FE' denotes as previous but illuminated as part of sign
 - 'RM' denotes non illuminated sign
- FIRE DOOR SIGNS AND FIRE ACTION NOTICES**
- Fire Action Notice
 - Emergency Floor Plan
 - "FIRE DOOR KEEP SHUT" sign
 - "FIRE DOOR KEEP LOCKED" sign
 - "AUTOMATIC FIRE DOOR KEEP CLEAR" or "FIRE EXIT KEEP CLEAR" sign
 - "CAUTION, IN THE EVENT OF FIRE DO NOT USE THIS LIFT"
 - DISTRIBUTION BOARD

FIRE DOORS

RISER DOORS

BENCHILL COURT TENTH FLOOR

REV	DATE	AMENDMENTS

PROJECT: BENCHILL COURT

ADDRESS: BENCHILL COURT
WYTHENSHAW
MANCHESTER
M22 4QL

DWG NO.: BE-C_220020_L11

DWG TITLE: LEVEL 10

DWG DATE: NOVEMBER 2022

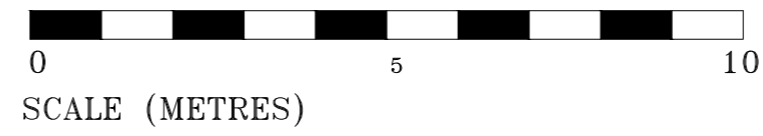
DWG SIZE: SCALE 1:50 @ A1

DRAWN: NR | CHECKED: BR

WEB: WWW.FIRNTEC.COM
EMAIL: CONTACTUS@FIRNTEC.COM
ADDRESS: 1ST FLOOR, ENDEAVOUR HOUSE, PARKWAY CT, FALMER, LEXINGTON, SURREY, GU11 1LH
TEL: 01753 977 147

THIS DRAWING IS TO BE READ IN CONJUNCTION WITH ALL RELEVANT SPECIFICATIONS AND DRAWINGS ISSUED. THIS DRAWING IS CORRECT AT TIME OF SURVEY

© COPYRIGHT FIRNTEC LTD 2022



- FIRE PRECAUTIONS LEGEND**
- Break glass type fire alarm call point
 - Heat sensitive detectors
 - Smoke sensitive detectors
 - Emergency light point.
 - Firemans Switch
 - Emergency Drop Key Access
 - Fire alarm indicator / repeat panel
 - Door/Access fitted with Gerda D1 Key lock
 - Door/Access fitted with FB1 Key lock
 - Door/Access fitted with FB2 Key lock
 - Door/Access fitted with FB4 Key lock
 - Door/Access fitted with FB11 Padlock
 - Door/Access fitted with FB14 Padlock
 - Dry Riser Outlet
 - Digital electronic lock door entry/exit system
 - Premises Information Box
 - Permanently Open Vent
 - Automatic Opening Vent
 - Openable Vent
 - Sprinkler Panel
 - Fire alarm sounder ('X' indicates integral flashing - Xenon light)
 - CCTV Security Camera
 - Fire Brigade Key Access
 - EXTINGUISH**
 - 1.1m x 1.1m fire blanket - base of container to be 1500mm above floor level
 - 6 litres AFFF aqueous foam extinguisher to BS:6575
 - 9 litre wet chemical type extinguisher
 - 4.5 litre dry powder type extinguisher
 - 2 kg carbon dioxide type extinguisher
 - 4.5 kg carbon dioxide type extinguisher
 - 9 kg water type extinguisher
 - 6 litre water type extinguisher
 - FIRE EXIT SIGNAGE**
 - 'E' Signs to be externally illuminated by adjacent emergency light point
 - 'FE' denotes as previous but illuminated as part of sign
 - 'RM' denotes non illuminated sign
 - FIRE DOOR SIGNS AND FIRE ACTION NOTICES**
 - Fire Action Notice
 - Emergency Floor Plan
 - "FIRE DOOR KEEP SHUT" sign
 - "FIRE DOOR KEEP LOCKED" sign
 - "AUTOMATIC FIRE DOOR KEEP CLEAR" or "FIRE EXIT KEEP CLEAR" sign
 - "CAUTION, IN THE EVENT OF FIRE DO NOT USE THIS LIFT"
 - DISTRIBUTION BOARD

- FIRE DOORS
- RISER DOORS

BENCHILL COURT ELEVENTH FLOOR

REV	DATE	AMENDMENTS

PROJECT: BENCHILL COURT

ADDRESS: BENCHILL COURT
WYTHENSHAW
MANCHESTER
M22 4QL

DWG NO.: BE-C-220020L12

DWG TITLE: LEVEL 11

DWG DATE: NOVEMBER 2022

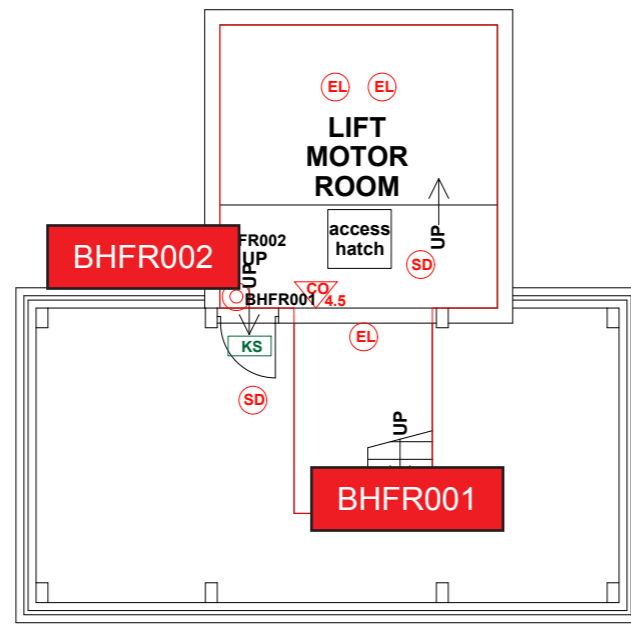
DWG SIZE: SCALE 1:50 @ A1

DRAWN: NR | CHECKED: BR | 10/4

WEB: WWW.FIRNTEC.COM
 EMAIL: CONTACTUS@FIRNTEC.COM
 ADDRESS: 1ST FLOOR, ENDEAVOUR HOUSE, PARKWAY CT, PLYMOUTH PL5 8LR
 TEL: 01752 971 147

THIS DRAWING IS TO BE READ IN CONJUNCTION WITH ALL RELEVANT SPECIFICATIONS AND DRAWINGS ISSUED. THIS DRAWING IS CORRECT AT TIME OF SURVEY

© COPYRIGHT FIRNTEC LTD 2022



- FIRE PRECAUTIONS LEGEND**
- ⊙ Break glass type fire alarm call point
 - ⊙ Heat sensitive detectors
 - ⊙ Smoke sensitive detectors
 - ⊙ Emergency light point.
 - ⊙ Firemans Switch
 - ⊙ Emergency Drop Key Access
 - FAP Fire alarm indicator / repeat panel
 - GD1 Door/Access fitted with Gerda D1 Key lock
 - FB1 Door/Access fitted with FB1 Key lock
 - FB2 Door/Access fitted with FB2 Key lock
 - FB4 Door/Access fitted with FB4 Key lock
 - FB11 Door/Access fitted with FB11 Padlock
 - FB14 Door/Access fitted with FB14 Padlock
 - RO Dry Riser Outlet
 - DEL Digital electronic lock door entry/exit system
 - PB Premises Information Box
 - POV Permanently Open Vent
 - AOV Automatic Opening Vent
 - OV Openable Vent
 - SPAN Sprinkler Panel
 - S- Fire alarm sounder ('X' indicates integral flashing - Xenon light)
 - CCTV CCTV Security Camera
 - FB Fire Brigade Key Access
 - EXTINGUISH**
 - BLNK 1.1m x 1.1m fire blanket - base of container to be 1500mm above floor level
 - 6 litres AFFF aqueous foam extinguisher to BS:6575
 - 9 litre wet chemical type extinguisher
 - 4.5 litre dry powder type extinguisher
 - 2 kg carbon dioxide type extinguisher
 - 4.5 kg carbon dioxide type extinguisher
 - 9 kg water type extinguisher
 - 6 litre water type extinguisher
 - FIRE EXIT SIGNAGE**
 - FE 'E' Signs to be externally illuminated by adjacent emergency light point
 - FE 'FE' denotes as previous but illuminated as part of sign
 - RM 'RM' denotes non illuminated sign
 - FIRE DOOR SIGNS AND FIRE ACTION NOTICES**
 - FAN Fire Action Notice
 - EFP Emergency Floor Plan
 - KS "FIRE DOOR KEEP SHUT" sign
 - KL "FIRE DOOR KEEP LOCKED" sign
 - KC "AUTOMATIC FIRE DOOR KEEP CLEAR" or "FIRE EXIT KEEP CLEAR" sign
 - LAN "CAUTION, IN THE EVENT OF FIRE DO NOT USE THIS LIFT"
 - DB DISTRIBUTION BOARD

BENCHILL COURT ROOF SPACE

- FIRE DOORS
- RISER DOORS

REV	DATE	AMENDMENTS

	PROJECT: BENCHILL COURT ADDRESS: BENCHILL COURT WYTHENSHAW MANCHESTER M22 1JL
	DWG NO.: BE-C-220020L13 DWG TITLE: ROOF DWG DATE: NOVEMBER 2022 DWG SIZE: SCALE 1:50 @ A1 DRAWN: NR CHECKED: BR ISS:
WEB: WWW.FIRNTEC.COM EMAIL: CONTACT@FIRNTEC.COM ADDRESS: 1ST FLOOR, ENGLANDOUR HOUSE, PARKWAY CT, PLYMOUTH PL4 8LR TEL: 01752 877 147	