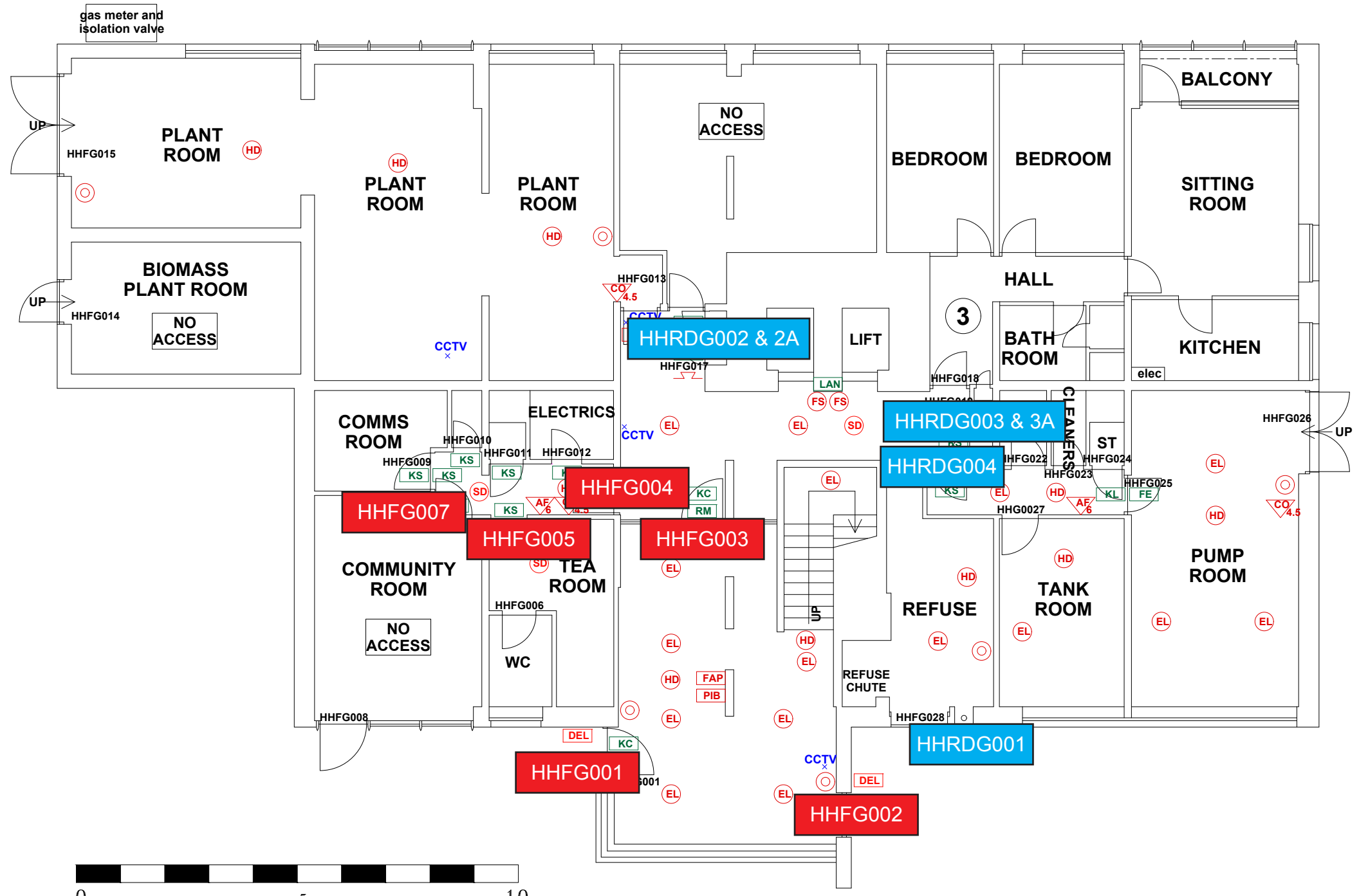
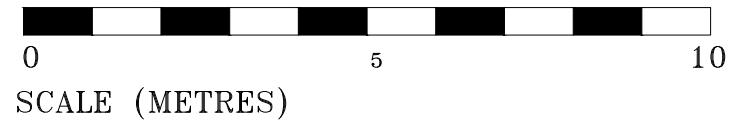


THIS DRAWING IS TO BE READ IN CONJUNCTION WITH ALL RELEVANT SPECIFICATIONS AND DRAWINGS ISSUED. THIS DRAWING IS CORRECT AT TIME OF SURVEY.  
 © COPYRIGHT FIRNTEC LTD 2022



- FIRE PRECAUTIONS LEGEND**
- Break glass type fire alarm call point
  - HD Heat sensitive detectors
  - SD Smoke sensitive detectors
  - EL Emergency light point.
  - FS Firemans Switch
  - EDK Emergency Drop Key Access
  - FAP Fire alarm indicator / repeat panel
  - GD1 Door/Access fitted with Gerda D1 Key lock
  - FB1 Door/Access fitted with FB1 Key lock
  - FB2 Door/Access fitted with FB2 Key lock
  - FB4 Door/Access fitted with FB4 Key lock
  - FB11 Door/Access fitted with FB11 Padlock
  - FB14 Door/Access fitted with FB14 Padlock
  - DRO Dry Riser Outlet
  - DEL Digital electronic lock door entry/exit system
  - PIB Premises Information Box
  - POV Permanently Open Vent
  - AOV Automatic Opening Vent
  - OV Openable Vent
  - X- Fire alarm sounder ("X" indicates integral flashing - Xenon light)
  - CCTV CCTV Security Camera
  - FB Fire Brigade Key Access
- EXTINGUISH**
- BLANKET 1.1m x 1.1m fire blanket - base of container to be 150mm above floor level
  - AF 6 6 litres AFFF aqueous foam extinguisher to BS:6575
  - W 9 litre wet chemical type extinguisher
  - D 4.5 litre dry powder type extinguisher
  - C 2 kg carbon dioxide type extinguisher
  - K 4.5 kg carbon dioxide type extinguisher
  - W 9 kg water type extinguisher
  - L 6 litre water type extinguisher
- FIRE EXIT SIGNAGE**
- E 'E' Signs to be externally illuminated by adjacent emergency light point
  - FE 'FE' denotes as previous but illuminated as part of sign
  - RM 'RM' denotes non illuminated sign
- FIRE DOOR SIGNS AND FIRE ACTION NOTICES**
- FAN Fire Action Notice
  - EFP Emergency Floor Plan
  - KS "FIRE DOOR KEEP SHUT" sign
  - KL "FIRE DOOR KEEP LOCKED" sign
  - KE "AUTOMATIC FIRE DOOR KEEP CLEAR" or "FIRE EXIT KEEP CLEAR" sign
  - LAN "CAUTION, IN THE EVENT OF FIRE DO NOT USE THIS LIFT"
  - DB DISTRIBUTION BOARD



# HOLLYHEDGE COURT GROUND FLOOR

FIRE DOORS

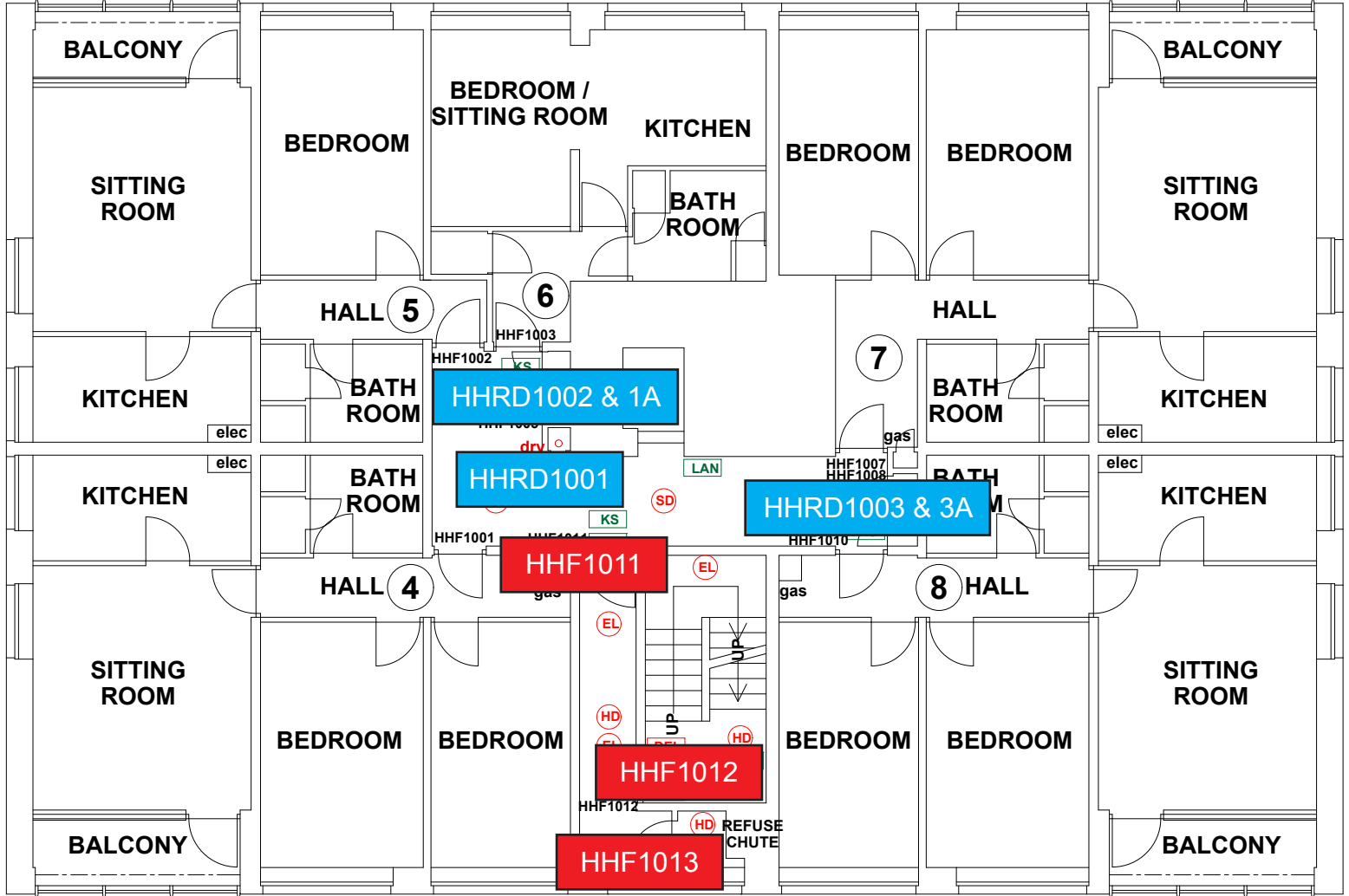
RISER DOORS

REV	DATE	AMENDMENTS

	PROJECT: HOLLYHEDGE COURT
	ADDRESS: HOLLYHEDGE COURT WYTHENSHAW MANCHESTER M22 4QP
	DWG NO.: HH-C-220020L01
	DWG TITLE: LEVEL 0
	DWG DATE: NOVEMBER 2022
	DWG SIZE: SCALE: 1:50 @ A1
TEL: 01752 977 147 WEB: WWW.FIRNTEC.COM EMAIL: CONTACTUS@FIRNTEC.COM ADDRESS: 1ST FLOOR, ENIGMAOUR HOUSE, PARKWAY CT, FLYBOOTH PLD BLD	DRAWN: NR CHECKED: BR DATE:

THIS DRAWING IS TO BE READ IN CONJUNCTION WITH ALL RELEVANT SPECIFICATIONS AND DRAWINGS ISSUED. THIS DRAWING IS CORRECT AT TIME OF SURVEY

© COPYRIGHT FIRNTEC LTD 2022



- FIRE PRECAUTIONS LEGEND**
- ⊙ Break glass type fire alarm call point
  - ⊙ Heat sensitive detectors
  - ⊙ Smoke sensitive detectors
  - ⊙ Emergency light point.
  - ⊙ Firemans Switch
  - ⊙ Emergency Drop Key Access
  - ⊙ Fire alarm indicator / repeat panel
  - ⊙ Door/Access fitted with Gerda D1 Key lock
  - ⊙ Door/Access fitted with FB1 Key lock
  - ⊙ Door/Access fitted with FB2 Key lock
  - ⊙ Door/Access fitted with FB4 Key lock
  - ⊙ Door/Access fitted with FB11 Padlock
  - ⊙ Door/Access fitted with FB14 Padlock
  - ⊙ Dry Riser Outlet
  - ⊙ Digital electronic lock door entry/exit system
  - ⊙ Premises Information Box
  - ⊙ Permanently Open Vent
  - ⊙ Automatic Opening Vent
  - ⊙ Openable Vent
  - ⊙ Fire alarm sounder ('X' indicates integral flashing - Xenon light)
  - ⊙ CCTV Security Camera
  - ⊙ Fire Brigade Key Access
- EXTINGUISH**
- ⊙ 1.1m x 1.1m fire blanket - base of container to be 1500mm above floor level
  - ⊙ 6 litres AFFF aqueous foam extinguisher to BS:6575
  - ⊙ 9 litre wet chemical type extinguisher
  - ⊙ 4.5 litre dry powder type extinguisher
  - ⊙ 2 kg carbon dioxide type extinguisher
  - ⊙ 4.5 kg carbon dioxide type extinguisher
  - ⊙ 9 kg water type extinguisher
  - ⊙ 6 litre water type extinguisher
- FIRE EXIT SIGNAGE**
- ⊙ 'E' Signs to be externally illuminated by adjacent emergency light point
  - ⊙ 'FE' denotes as previous but illuminated as part of sign
  - ⊙ 'RM' denotes non illuminated sign
- FIRE DOOR SIGNS AND FIRE ACTION NOTICES**
- ⊙ Fire Action Notice
  - ⊙ Emergency Floor Plan
  - ⊙ "FIRE DOOR KEEP SHUT" sign
  - ⊙ "FIRE DOOR KEEP LOCKED" sign
  - ⊙ "AUTOMATIC FIRE DOOR KEEP CLEAR" or "FIRE EXIT KEEP CLEAR" sign
  - ⊙ "CAUTION, IN THE EVENT OF FIRE DO NOT USE THIS LIFT"
  - ⊙ DISTRIBUTION BOARD



SCALE (METRES)

# HOLLYHEDGE COURT FIRST FLOOR

- FIRE DOORS
- RISER DOORS

REV	DATE	AMENDMENTS

PROJECT:	HOLLYHEDGE COURT
ADDRESS:	HOLLYHEDGE COURT WYTHENSHAW MANCHESTER M22 4QP
DWG NO.:	HH-C_220020L_02
DWG TITLE:	LEVEL 1
DWG DATE:	NOVEMBER 2022
DWG SIZE:	SCALE 1:50 @ A1
TEL:	01762 977 147
DRAWN:	NR
CHECKED:	BR

THIS DRAWING IS TO BE READ IN CONJUNCTION WITH ALL RELEVANT SPECIFICATIONS AND DRAWINGS ISSUED. THIS DRAWING IS CORRECT AT TIME OF SURVEY

© COPYRIGHT FIRNTEC LTD 2022



- FIRE PRECAUTIONS LEGEND**
- ⊙ Break glass type fire alarm call point
  - ⊕ Heat sensitive detectors
  - ⊕ Smoke sensitive detectors
  - ⊕ Emergency light point.
  - ⊕ Firemans Switch
  - ⊕ Emergency Drop Key Access
  - ⊕ Fire alarm indicator / repeat panel
  - ⊕ Door/Access fitted with Gerda D1 Key lock
  - ⊕ Door/Access fitted with FB1 Key lock
  - ⊕ Door/Access fitted with FB2 Key lock
  - ⊕ Door/Access fitted with FB4 Key lock
  - ⊕ Door/Access fitted with FB11 Padlock
  - ⊕ Door/Access fitted with FB14 Padlock
  - ⊕ Dry Riser Outlet
  - ⊕ Digital electronic lock door entry/exit system
  - ⊕ Premises Information Box
  - ⊕ Permanently Open Vent
  - ⊕ Automatic Opening Vent
  - ⊕ Openable Vent
  - ⊕ Fire alarm sounder ('X' indicates integral flashing - Xenon light)
  - ⊕ CCTV Security Camera
  - ⊕ Fire Brigade Key Access
- EXTINGUISH**
- ⊕ 1.1m x 1.1m fire blanket - base of container to be 1500mm above floor level
  - ⊕ 6 litres AFFF aqueous foam extinguisher to BS:6575
  - ⊕ 9 litre wet chemical type extinguisher
  - ⊕ 4.5 litre dry powder type extinguisher
  - ⊕ 2 kg carbon dioxide type extinguisher
  - ⊕ 4.5 kg carbon dioxide type extinguisher
  - ⊕ 9 kg water type extinguisher
  - ⊕ 6 litre water type extinguisher
- FIRE EXIT SIGNAGE**
- ⊕ 'E' Signs to be externally illuminated by adjacent emergency light point
  - ⊕ 'FE' denotes as previous but illuminated as part of sign
  - ⊕ 'RM' denotes non illuminated sign
- FIRE DOOR SIGNS AND FIRE ACTION NOTICES**
- ⊕ Fire Action Notice
  - ⊕ Emergency Floor Plan
  - ⊕ "FIRE DOOR KEEP SHUT" sign
  - ⊕ "FIRE DOOR KEEP LOCKED" sign
  - ⊕ "AUTOMATIC FIRE DOOR KEEP CLEAR" or "FIRE EXIT KEEP CLEAR" sign
  - ⊕ "CAUTION, IN THE EVENT OF FIRE DO NOT USE THIS LIFT"
  - ⊕ DISTRIBUTION BOARD



# HOLLYHEDGE COURT SECOND FLOOR

- FIRE DOORS
- RISER DOORS

REV	DATE	AMENDMENTS

**PROJECT: HOLLYHEDGE COURT**

ADDRESS: HOLLYHEDGE COURT  
WYTHENSHAW  
MANCHESTER  
M22 4QP

DWG NO.: HH-C\_220020\_L03

DWG TITLE: LEVEL 2

DWG DATE: NOVEMBER 2022

DWG SIZE: SCALE 1:50 @ A1

DRAWN: NR | CHECKED: BR

WEB: WWW.FIRNTEC.COM  
 EMAIL: CONTACT@FIRNTEC.COM  
 ADDRESS: 1ST FLOOR, ENDEAVOUR HOUSE,  
 PARKWAY CT, PLYMOUTH PL6 8LR  
 TEL: 01752 977 147

THIS DRAWING IS TO BE READ IN CONJUNCTION WITH ALL RELEVANT SPECIFICATIONS AND DRAWINGS ISSUED. THIS DRAWING IS CORRECT AT TIME OF SURVEY

© COPYRIGHT FIRNTEC LTD 2022



- FIRE PRECAUTIONS LEGEND**
- ⊙ Break glass type fire alarm call point
  - ⊙ Heat sensitive detectors
  - ⊙ Smoke sensitive detectors
  - ⊙ Emergency light point.
  - ⊙ Firemans Switch
  - ⊙ Emergency Drop Key Access
  - ⊙ Fire alarm indicator / repeat panel
  - ⊙ Door/Access fitted with Gerda D1 Key lock
  - ⊙ Door/Access fitted with FB1 Key lock
  - ⊙ Door/Access fitted with FB2 Key lock
  - ⊙ Door/Access fitted with FB4 Key lock
  - ⊙ Door/Access fitted with FB11 Padlock
  - ⊙ Door/Access fitted with FB14 Padlock
  - ⊙ Dry Riser Outlet
  - ⊙ Digital electronic lock door entry/exit system
  - ⊙ Premises Information Box
  - ⊙ Permanently Open Vent
  - ⊙ Automatic Opening Vent
  - ⊙ Openable Vent
  - ⊙ Fire alarm sounder ('X' indicates integral flashing - Xenon light)
  - ⊙ CCTV Security Camera
  - ⊙ Fire Brigade Key Access
- EXTINGUISH**
- ⊙ 1.1m x 1.1m fire blanket - base of container to be 1500mm above floor level
  - ⊙ 6 litres AFFF aqueous foam extinguisher to BS:6575
  - ⊙ 9 litre wet chemical type extinguisher
  - ⊙ 4.5 litre dry powder type extinguisher
  - ⊙ 2 kg carbon dioxide type extinguisher
  - ⊙ 4.5 kg carbon dioxide type extinguisher
  - ⊙ 9 kg water type extinguisher
  - ⊙ 6 litre water type extinguisher
- FIRE EXIT SIGNAGE**
- ⊙ 'E' Signs to be externally illuminated by adjacent emergency light point
  - ⊙ 'FE' denotes as previous but illuminated as part of sign
  - ⊙ 'RM' denotes non illuminated sign
- FIRE DOOR SIGNS AND FIRE ACTION NOTICES**
- ⊙ Fire Action Notice
  - ⊙ Emergency Floor Plan
  - ⊙ "FIRE DOOR KEEP SHUT" sign
  - ⊙ "FIRE DOOR KEEP LOCKED" sign
  - ⊙ "AUTOMATIC FIRE DOOR KEEP CLEAR" or "FIRE EXIT KEEP CLEAR" sign
  - ⊙ "CAUTION, IN THE EVENT OF FIRE DO NOT USE THIS LIFT"
  - ⊙ DISTRIBUTION BOARD



# HOLLYHEDGE COURT THIRD FLOOR

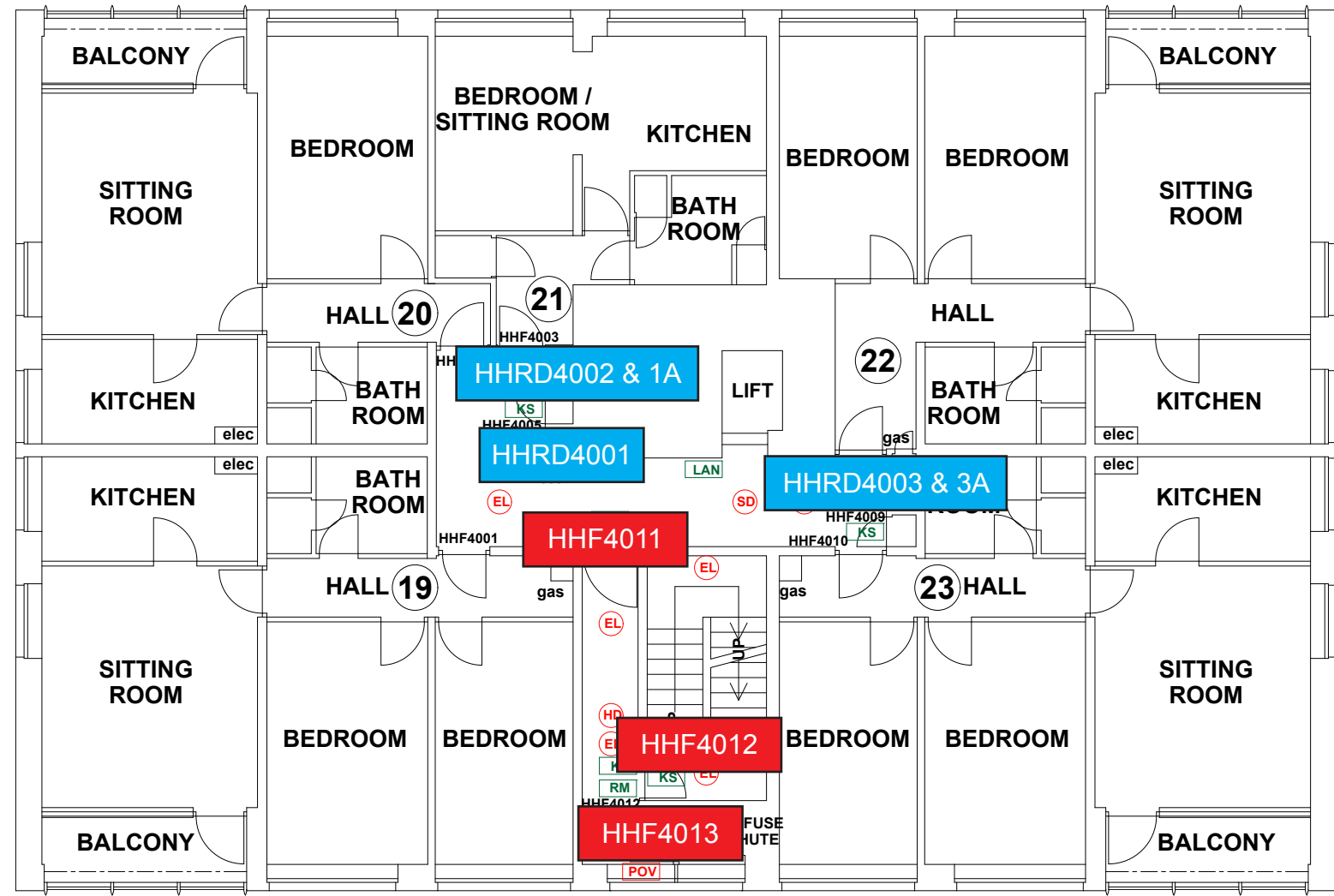
- FIRE DOORS
- RISER DOORS

REV	DATE	AMENDMENTS

PROJECT:	HOLLYHEDGE COURT
ADDRESS:	HOLLYHEDGE COURT WYTHENSHAW MANCHESTER M22 4QP
DWG NO.:	HH-C_220020L04
DWG TITLE:	LEVEL 3
DWG DATE:	NOVEMBER 2022
DWG SIZE:	SCALE 1:50 @ A1
TEL:	01762 977 147
DRAWN:	NR
CHECKED:	BR

THIS DRAWING IS TO BE READ IN CONJUNCTION WITH ALL RELEVANT SPECIFICATIONS AND DRAWINGS ISSUED. THIS DRAWING IS CORRECT AT TIME OF SURVEY

© COPYRIGHT FIRNTEC LTD 2022



- FIRE PRECAUTIONS LEGEND**
- Break glass type fire alarm call point
  - Heat sensitive detectors
  - Smoke sensitive detectors
  - Emergency light point.
  - Firemans Switch
  - Emergency Drop Key Access
  - Fire alarm indicator / repeat panel
  - Door/Access fitted with Gerda D1 Key lock
  - Door/Access fitted with FB1 Key lock
  - Door/Access fitted with FB2 Key lock
  - Door/Access fitted with FB4 Key lock
  - Door/Access fitted with FB11 Padlock
  - Door/Access fitted with FB14 Padlock
  - Dry Riser Outlet
  - Digital electronic lock door entry/exit system
  - Premises Information Box
  - Permanently Open Vent
  - Automatic Opening Vent
  - Openable Vent
  - Fire alarm sounder (X indicates integral flashing - Xenon light)
  - CCTV Security Camera
  - Fire Brigade Key Access
  - EXTINGUISH**
  - 1.1m x 1.1m fire blanket - base of container to be 1500mm above floor level
  - 6 litres AFFF aqueous foam extinguisher to BS:6575
  - 9 litre wet chemical type extinguisher
  - 4.5 litre dry powder type extinguisher
  - 2 kg carbon dioxide type extinguisher
  - 4.5 kg carbon dioxide type extinguisher
  - 9 kg water type extinguisher
  - 6 litre water type extinguisher
  - FIRE EXIT SIGNAGE**
  - 'E' Signs to be externally illuminated by adjacent emergency light point
  - 'FE' denotes as previous but illuminated as part of sign
  - 'RM' denotes non illuminated sign
  - FIRE DOOR SIGNS AND FIRE ACTION NOTICES**
  - Fire Action Notice
  - Emergency Floor Plan
  - "FIRE DOOR KEEP SHUT" sign
  - "FIRE DOOR KEEP LOCKED" sign
  - "AUTOMATIC FIRE DOOR KEEP CLEAR" or "FIRE EXIT KEEP CLEAR" sign
  - "CAUTION, IN THE EVENT OF FIRE DO NOT USE THIS LIFT"
  - DISTRIBUTION BOARD



# HOLLYHEDGE COURT FOURTH FLOOR

- FIRE DOORS
- RISER DOORS

REV	DATE	AMENDMENTS

PROJECT:	HOLLYHEDGE COURT
ADDRESS:	HOLLYHEDGE COURT WYTHENSHAW MANCHESTER M22 4QP
DWG NO.:	HH-C_220020L_05
DWG TITLE:	LEVEL 4
DWG DATE:	NOVEMBER 2022
DWG SIZE:	SCALE 1:50 @ A1
TEL:	01762 977 147
DRAWN:	NR
CHECKED:	BR

THIS DRAWING IS TO BE READ IN CONJUNCTION WITH ALL RELEVANT SPECIFICATIONS AND DRAWINGS ISSUED. THIS DRAWING IS CORRECT AT TIME OF SURVEY

© COPYRIGHT FIRNTEC LTD 2022



- FIRE PRECAUTIONS LEGEND**
- ⊙ Break glass type fire alarm call point
  - ⊕ Heat sensitive detectors
  - ⊖ Smoke sensitive detectors
  - ⊙ Emergency light point.
  - ⊕ Firemans Switch
  - ⊖ Emergency Drop Key Access
  - ⊙ Fire alarm indicator / repeat panel
  - ⊕ Door/Access fitted with Gerda D1 Key lock
  - ⊖ Door/Access fitted with FB1 Key lock
  - ⊕ Door/Access fitted with FB2 Key lock
  - ⊖ Door/Access fitted with FB4 Key lock
  - ⊕ Door/Access fitted with FB11 Padlock
  - ⊖ Door/Access fitted with FB14 Padlock
  - ⊙ Dry Riser Outlet
  - ⊕ Digital electronic lock door entry/exit system
  - ⊖ Premises Information Box
  - ⊕ Permanently Open Vent
  - ⊖ Automatic Opening Vent
  - ⊕ Openable Vent
  - ⊖ Fire alarm sounder ('X' indicates integral flashing - Xenon light)
  - CCTV CCTV Security Camera
  - ⊕ Fire Brigade Key Access
  - EXTINGUISH**
  - BLK 1.1m x 1.1m fire blanket - base of container to be 1500mm above floor level
  - AFFF 6 litres AFFF aqueous foam extinguisher to BS:6575
  - W 9 litre wet chemical type extinguisher
  - D 4.5 litre dry powder type extinguisher
  - C 2 kg carbon dioxide type extinguisher
  - C 4.5 kg carbon dioxide type extinguisher
  - W 9 kg water type extinguisher
  - W 6 litre water type extinguisher
  - FIRE EXIT SIGNAGE**
  - E 'E' Signs to be externally illuminated by adjacent emergency light point
  - FE 'FE' denotes as previous but illuminated as part of sign
  - RM 'RM' denotes non illuminated sign
  - FIRE DOOR SIGNS AND FIRE ACTION NOTICES**
  - FAN Fire Action Notice
  - EFP Emergency Floor Plan
  - KS "FIRE DOOR KEEP SHUT" sign
  - KL "FIRE DOOR KEEP LOCKED" sign
  - KC "AUTOMATIC FIRE DOOR KEEP CLEAR" or "FIRE EXIT KEEP CLEAR" sign
  - LAN "CAUTION, IN THE EVENT OF FIRE DO NOT USE THIS LIFT"
  - DB DISTRIBUTION BOARD



SCALE (METRES)

# HOLLYHEDGE COURT FIFTH FLOOR

- FIRE DOORS
- RISER DOORS

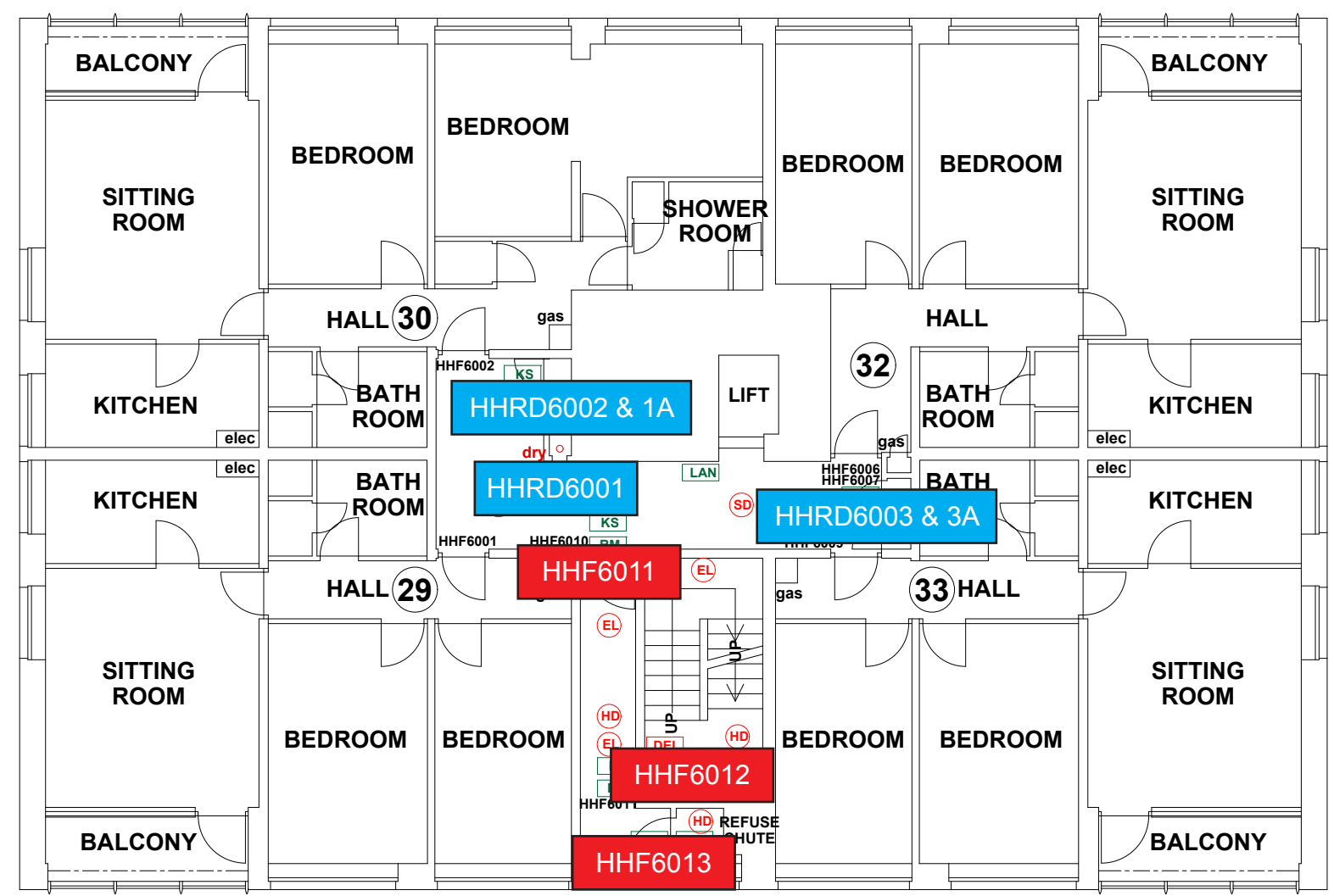
REV	DATE	AMENDMENTS

WEB: WWW.FIRNTEC.COM  
EMAIL: CONTACT@FIRNTEC.COM  
ADDRESS: 1ST FLOOR, ENDEAVOUR HOUSE, PARKWAY CT, PLYMOUTH PL6 6LR  
TEL: 01752 977 147

PROJECT: HOLLYHEDGE COURT  
ADDRESS: HOLLYHEDGE COURT, WYTHENSHAW, MANCHESTER, M22 4QP  
DWG NO.: HH-C\_220020L06  
DWG TITLE: LEVEL 5  
DWG DATE: NOVEMBER 2022  
DWG SIZE: SCALE 1:50 @ A1  
DRAWN: NR | CHECKED: BR

THIS DRAWING IS TO BE READ IN CONJUNCTION WITH ALL RELEVANT SPECIFICATIONS AND DRAWINGS ISSUED. THIS DRAWING IS CORRECT AT TIME OF SURVEY

© COPYRIGHT FIRNTEC LTD 2022



- FIRE PRECAUTIONS LEGEND**
- ⊙ Break glass type fire alarm call point
  - ⊙ Heat sensitive detectors
  - ⊙ Smoke sensitive detectors
  - ⊙ Emergency light point.
  - ⊙ Firemans Switch
  - ⊙ Emergency Drop Key Access
  - ⊙ Fire alarm indicator / repeat panel
  - ⊙ Door/Access fitted with Gerda D1 Key lock
  - ⊙ Door/Access fitted with FB1 Key lock
  - ⊙ Door/Access fitted with FB2 Key lock
  - ⊙ Door/Access fitted with FB4 Key lock
  - ⊙ Door/Access fitted with FB11 Padlock
  - ⊙ Door/Access fitted with FB14 Padlock
  - ⊙ Dry Riser Outlet
  - ⊙ Digital electronic lock door entry/exit system
  - ⊙ Premises Information Box
  - ⊙ Permanently Open Vent
  - ⊙ Automatic Opening Vent
  - ⊙ Openable Vent
  - ⊙ Fire alarm sounder ('X' indicates integral flashing - Xenon light)
  - ⊙ CCTV Security Camera
  - ⊙ Fire Brigade Key Access
  - EXTINGUISH**
  - ⊙ 1.1m x 1.1m fire blanket - base of container to be 1500mm above floor level
  - ⊙ 6 litres AFFF aqueous foam extinguisher to BS:6575
  - ⊙ 9 litre wet chemical type extinguisher
  - ⊙ 4.5 litre dry powder type extinguisher
  - ⊙ 2 kg carbon dioxide type extinguisher
  - ⊙ 4.5 kg carbon dioxide type extinguisher
  - ⊙ 9 kg water type extinguisher
  - ⊙ 6 litre water type extinguisher
  - FIRE EXIT SIGNAGE**
  - ⊙ 'E' Signs to be externally illuminated by adjacent emergency light point
  - ⊙ 'FE' denotes as previous but illuminated as part of sign
  - ⊙ 'RM' denotes non illuminated sign
  - FIRE DOOR SIGNS AND FIRE ACTION NOTICES**
  - ⊙ Fire Action Notice
  - ⊙ Emergency Floor Plan
  - ⊙ "FIRE DOOR KEEP SHUT" sign
  - ⊙ "FIRE DOOR KEEP LOCKED" sign
  - ⊙ "AUTOMATIC FIRE DOOR KEEP CLEAR" or "FIRE EXIT KEEP CLEAR" sign
  - ⊙ "CAUTION, IN THE EVENT OF FIRE DO NOT USE THIS LIFT"
  - ⊙ DISTRIBUTION BOARD



# HOLLYHEDGE COURT SIXTH FLOOR

- FIRE DOORS
- RISER DOORS

REV	DATE	AMENDMENTS

WEB: WWW.FIRNTEC.COM  
 EMAIL: CONTACT@FIRNTEC.COM  
 ADDRESS: 1ST FLOOR, ENDEAVOUR HOUSE, PARKWAY CT, PLYMOUTH PL6 8LR  
 TEL: 01752 977 147

PROJECT: **HOLLYHEDGE COURT**

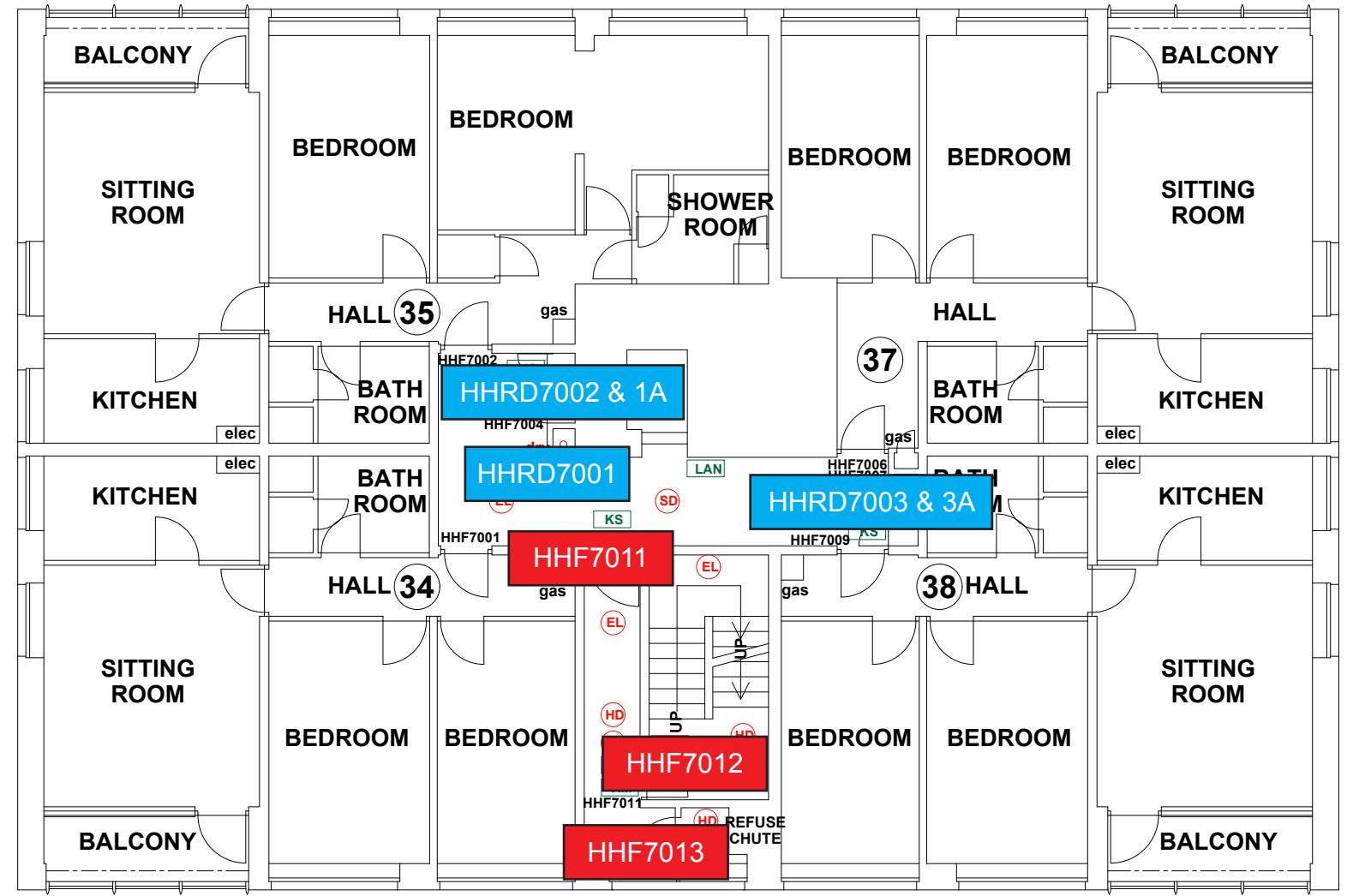
ADDRESS: HOLLYHEDGE COURT  
 WYTHENSHAW  
 MANCHESTER  
 M22 4QP

DWG NO.: HH-C\_220020L\_07  
 DWG TITLE: LEVEL 6  
 DWG DATE: NOVEMBER 2022  
 DWG SIZE: SCALE 1:50 @ A1

DRAWN: NR | CHECKED: BR

THIS DRAWING IS TO BE READ IN CONJUNCTION WITH ALL RELEVANT SPECIFICATIONS AND DRAWINGS ISSUED. THIS DRAWING IS CORRECT AT TIME OF SURVEY

© COPYRIGHT FIRNTEC LTD 2022



- FIRE PRECAUTIONS LEGEND**
- ⊙ Break glass type fire alarm call point
  - ⊕ Heat sensitive detectors
  - ⊕ Smoke sensitive detectors
  - ⊕ Emergency light point.
  - ⊕ Firemans Switch
  - ⊕ Emergency Drop Key Access
  - ⊕ Fire alarm indicator / repeat panel
  - ⊕ Door/Access fitted with Gerda D1 Key lock
  - ⊕ Door/Access fitted with FB1 Key lock
  - ⊕ Door/Access fitted with FB2 Key lock
  - ⊕ Door/Access fitted with FB4 Key lock
  - ⊕ Door/Access fitted with FB11 Padlock
  - ⊕ Door/Access fitted with FB14 Padlock
  - ⊕ Dry Riser Outlet
  - ⊕ Digital electronic lock door entry/exit system
  - ⊕ Premises Information Box
  - ⊕ Permanently Open Vent
  - ⊕ Automatic Opening Vent
  - ⊕ Openable Vent
  - ⊕ Fire alarm sounder ('X' indicates integral flashing - Xenon light)
  - ⊕ CCTV Security Camera
  - ⊕ Fire Brigade Key Access
  - EXTINGUISH**
  - ⊕ 1.1m x 1.1m fire blanket - base of container to be 1500mm above floor level
  - ⊕ 6 litres AFFF aqueous foam extinguisher to BS:6575
  - ⊕ 9 litre wet chemical type extinguisher
  - ⊕ 4.5 litre dry powder type extinguisher
  - ⊕ 2 kg carbon dioxide type extinguisher
  - ⊕ 4.5 kg carbon dioxide type extinguisher
  - ⊕ 9 kg water type extinguisher
  - ⊕ 6 litre water type extinguisher
  - FIRE EXIT SIGNAGE**
  - ⊕ 'E' Signs to be externally illuminated by adjacent emergency light point
  - ⊕ 'FE' denotes as previous but illuminated as part of sign
  - ⊕ 'RM' denotes non illuminated sign
  - FIRE DOOR SIGNS AND FIRE ACTION NOTICES**
  - ⊕ Fire Action Notice
  - ⊕ Emergency Floor Plan
  - ⊕ "FIRE DOOR KEEP SHUT" sign
  - ⊕ "FIRE DOOR KEEP LOCKED" sign
  - ⊕ "AUTOMATIC FIRE DOOR KEEP CLEAR" or "FIRE EXIT KEEP CLEAR" sign
  - ⊕ "CAUTION, IN THE EVENT OF FIRE DO NOT USE THIS LIFT"
  - ⊕ DISTRIBUTION BOARD



# HOLLYHEDGE COURT SEVENTH FLOOR

- FIRE DOORS
- RISER DOORS

REV	DATE	AMENDMENTS

WEB: WWW.FIRNTEC.COM  
 EMAIL: CONTACTUS@FIRNTEC.COM  
 ADDRESS: 1ST FLOOR, ENDEAVOUR HOUSE, PARKWAY CT, PLYMOUTH PL6 6LR  
 TEL: 01752 977 147

PROJECT: **HOLLYHEDGE COURT**

ADDRESS: HOLLYHEDGE COURT  
 WYTHENSHAW  
 MANCHESTER  
 M22 4QP

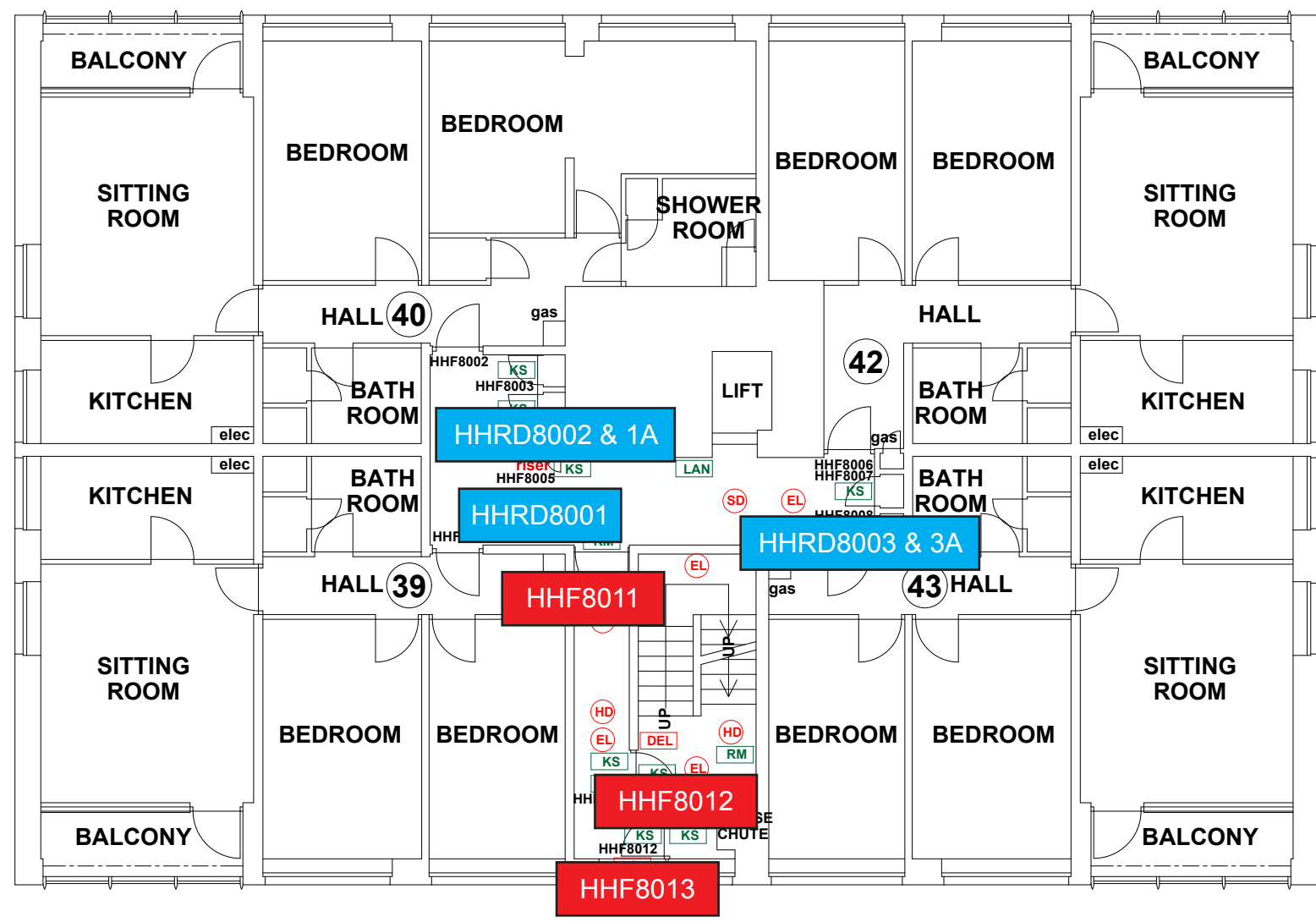
DWG NO.: HH-C\_220020L08  
 DWG TITLE: LEVEL 7  
 DWG DATE: NOVEMBER 2022  
 DWG SIZE: SCALE 1:50 @ A1

DRAWN: NR | CHECKED: BR



THIS DRAWING IS TO BE READ IN CONJUNCTION WITH ALL RELEVANT SPECIFICATIONS AND DRAWINGS ISSUED. THIS DRAWING IS CORRECT AT TIME OF SURVEY

© COPYRIGHT FIRNTEC LTD 2022



- FIRE PRECAUTIONS LEGEND**
- Break glass type fire alarm call point
  - Heat sensitive detectors
  - Smoke sensitive detectors
  - Emergency light point.
  - Firemans Switch
  - Emergency Drop Key Access
  - Fire alarm indicator / repeat panel
  - Door/Access fitted with Gerda D1 Key lock
  - Door/Access fitted with FB1 Key lock
  - Door/Access fitted with FB2 Key lock
  - Door/Access fitted with FB4 Key lock
  - Door/Access fitted with FB11 Padlock
  - Door/Access fitted with FB14 Padlock
  - Dry Riser Outlet
  - Digital electronic lock door entry/exit system
  - Premises Information Box
  - Permanently Open Vent
  - Automatic Opening Vent
  - Openable Vent
  - Fire alarm sounder ('X' indicates integral flashing - Xenon light)
  - CCTV Security Camera
  - Fire Brigade Key Access
  - EXTINGUISH**
  - 1.1m x 1.1m fire blanket - base of container to be 1500mm above floor level
  - 6 litres AFFF aqueous foam extinguisher to BS:6575
  - 9 litre wet chemical type extinguisher
  - 4.5 litre dry powder type extinguisher
  - 2 kg carbon dioxide type extinguisher
  - 4.5 kg carbon dioxide type extinguisher
  - 9 kg water type extinguisher
  - 6 litre water type extinguisher
  - FIRE EXIT SIGNAGE**
  - 'E' Signs to be externally illuminated by adjacent emergency light point
  - 'FE' denotes as previous but illuminated as part of sign
  - 'RM' denotes non illuminated sign
  - FIRE DOOR SIGNS AND FIRE ACTION NOTICES**
  - Fire Action Notice
  - Emergency Floor Plan
  - "FIRE DOOR KEEP SHUT" sign
  - "FIRE DOOR KEEP LOCKED" sign
  - "AUTOMATIC FIRE DOOR KEEP CLEAR" or "FIRE EXIT KEEP CLEAR" sign
  - "CAUTION, IN THE EVENT OF FIRE DO NOT USE THIS LIFT"
  - DISTRIBUTION BOARD



# HOLLYHEDGE COURT EIGHTH FLOOR

- FIRE DOORS
- RISER DOORS

REV	DATE	AMENDMENTS

PROJECT:	HOLLYHEDGE COURT
ADDRESS:	HOLLYHEDGE COURT WYTHENSHAW MANCHESTER M22 4QP
DWG NO.:	HH-C_220020L_09
DWG TITLE:	ROOF
DWG DATE:	NOVEMBER 2022
DWG SIZE:	SCALE 1:50 @ A1
TEL:	01762 977 147
DRAWN:	NR
CHECKED:	BR

THIS DRAWING IS TO BE READ IN CONJUNCTION WITH ALL RELEVANT SPECIFICATIONS AND DRAWINGS ISSUED. THIS DRAWING IS CORRECT AT TIME OF SURVEY

© COPYRIGHT FIRNTEC LTD 2022



- FIRE PRECAUTIONS LEGEND**
- Break glass type fire alarm call point
  - Heat sensitive detectors
  - Smoke sensitive detectors
  - Emergency light point.
  - Firemans Switch
  - Emergency Drop Key Access
  - Fire alarm indicator / repeat panel
  - Door/Access fitted with Gerda D1 Key lock
  - Door/Access fitted with FB1 Key lock
  - Door/Access fitted with FB2 Key lock
  - Door/Access fitted with FB4 Key lock
  - Door/Access fitted with FB11 Padlock
  - Door/Access fitted with FB14 Padlock
  - Dry Riser Outlet
  - Digital electronic lock door entry/exit system
  - Premises Information Box
  - Permanently Open Vent
  - Automatic Opening Vent
  - Openable Vent
  - Fire alarm sounder ('X' indicates integral flashing - Xenon light)
  - CCTV Security Camera
  - Fire Brigade Key Access
  - EXTINGUISH**
  - 1.1m x 1.1m fire blanket - base of container to be 1500mm above floor level
  - 6 litres AFFF aqueous foam extinguisher to BS:6575
  - 9 litre wet chemical type extinguisher
  - 4.5 litre dry powder type extinguisher
  - 2 kg carbon dioxide type extinguisher
  - 4.5 kg carbon dioxide type extinguisher
  - 9 kg water type extinguisher
  - 6 litre water type extinguisher
  - FIRE EXIT SIGNAGE**
  - 'E' Signs to be externally illuminated by adjacent emergency light point
  - 'FE' denotes as previous but illuminated as part of sign
  - 'RM' denotes non illuminated sign
  - FIRE DOOR SIGNS AND FIRE ACTION NOTICES**
  - Fire Action Notice
  - Emergency Floor Plan
  - "FIRE DOOR KEEP SHUT" sign
  - "FIRE DOOR KEEP LOCKED" sign
  - "AUTOMATIC FIRE DOOR KEEP CLEAR" or "FIRE EXIT KEEP CLEAR" sign
  - "CAUTION, IN THE EVENT OF FIRE DO NOT USE THIS LIFT"
  - DISTRIBUTION BOARD



# HOLLYHEDGE COURT NINTH FLOOR

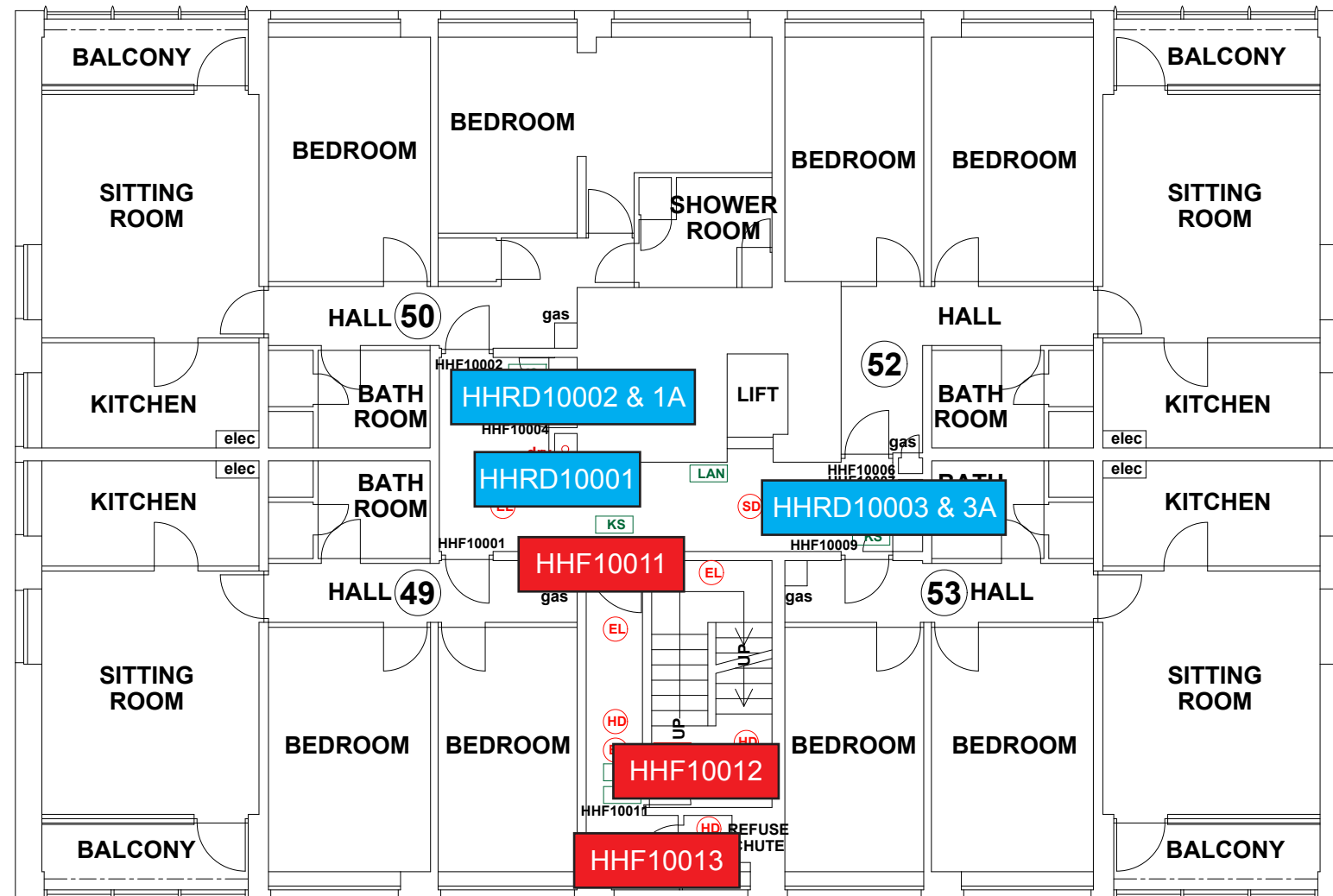
- FIRE DOORS
- RISER DOORS

REV	DATE	AMENDMENTS

PROJECT:	HOLLYHEDGE COURT
ADDRESS:	HOLLYHEDGE COURT WYTHENSHAW MANCHESTER M22 4QP
DWG NO.:	HH-C_220020_L10
DWG TITLE:	LEVEL 9
DWG DATE:	NOVEMBER 2022
DWG SIZE:	SCALE 1:50 @ A1
TEL:	01762 977 147
DRAWN:	NR
CHECKED:	BR

THIS DRAWING IS TO BE READ IN CONJUNCTION WITH ALL RELEVANT SPECIFICATIONS AND DRAWINGS ISSUED. THIS DRAWING IS CORRECT AT TIME OF SURVEY

© COPYRIGHT FIRNTEC LTD 2022



- FIRE PRECAUTIONS LEGEND**
- Break glass type fire alarm call point
  - Heat sensitive detectors
  - Smoke sensitive detectors
  - Emergency light point.
  - Firemans Switch
  - Emergency Drop Key Access
  - Fire alarm indicator / repeat panel
  - Door/Access fitted with Gerda D1 Key lock
  - Door/Access fitted with FB1 Key lock
  - Door/Access fitted with FB2 Key lock
  - Door/Access fitted with FB4 Key lock
  - Door/Access fitted with FB11 Padlock
  - Door/Access fitted with FB14 Padlock
  - Dry Riser Outlet
  - Digital electronic lock door entry/exit system
  - Premises Information Box
  - Permanently Open Vent
  - Automatic Opening Vent
  - Openable Vent
  - Fire alarm sounder ('X' indicates integral flashing - Xenon light)
  - CCTV Security Camera
  - Fire Brigade Key Access
  - EXTINGUISH**
  - 1.1m x 1.1m fire blanket - base of container to be 1500mm above floor level
  - 6 litres AFFF aqueous foam extinguisher to BS:6575
  - 9 litre wet chemical type extinguisher
  - 4.5 litre dry powder type extinguisher
  - 2 kg carbon dioxide type extinguisher
  - 4.5 kg carbon dioxide type extinguisher
  - 9 kg water type extinguisher
  - 6 litre water type extinguisher
  - FIRE EXIT SIGNAGE**
  - 'E' Signs to be externally illuminated by adjacent emergency light point
  - 'FE' denotes as previous but illuminated as part of sign
  - 'RM' denotes non illuminated sign
  - FIRE DOOR SIGNS AND FIRE ACTION NOTICES**
  - Fire Action Notice
  - Emergency Floor Plan
  - "FIRE DOOR KEEP SHUT" sign
  - "FIRE DOOR KEEP LOCKED" sign
  - "AUTOMATIC FIRE DOOR KEEP CLEAR" or "FIRE EXIT KEEP CLEAR" sign
  - "CAUTION, IN THE EVENT OF FIRE DO NOT USE THIS LIFT"
  - DISTRIBUTION BOARD



# HOLLYHEDGE COURT TENTH FLOOR

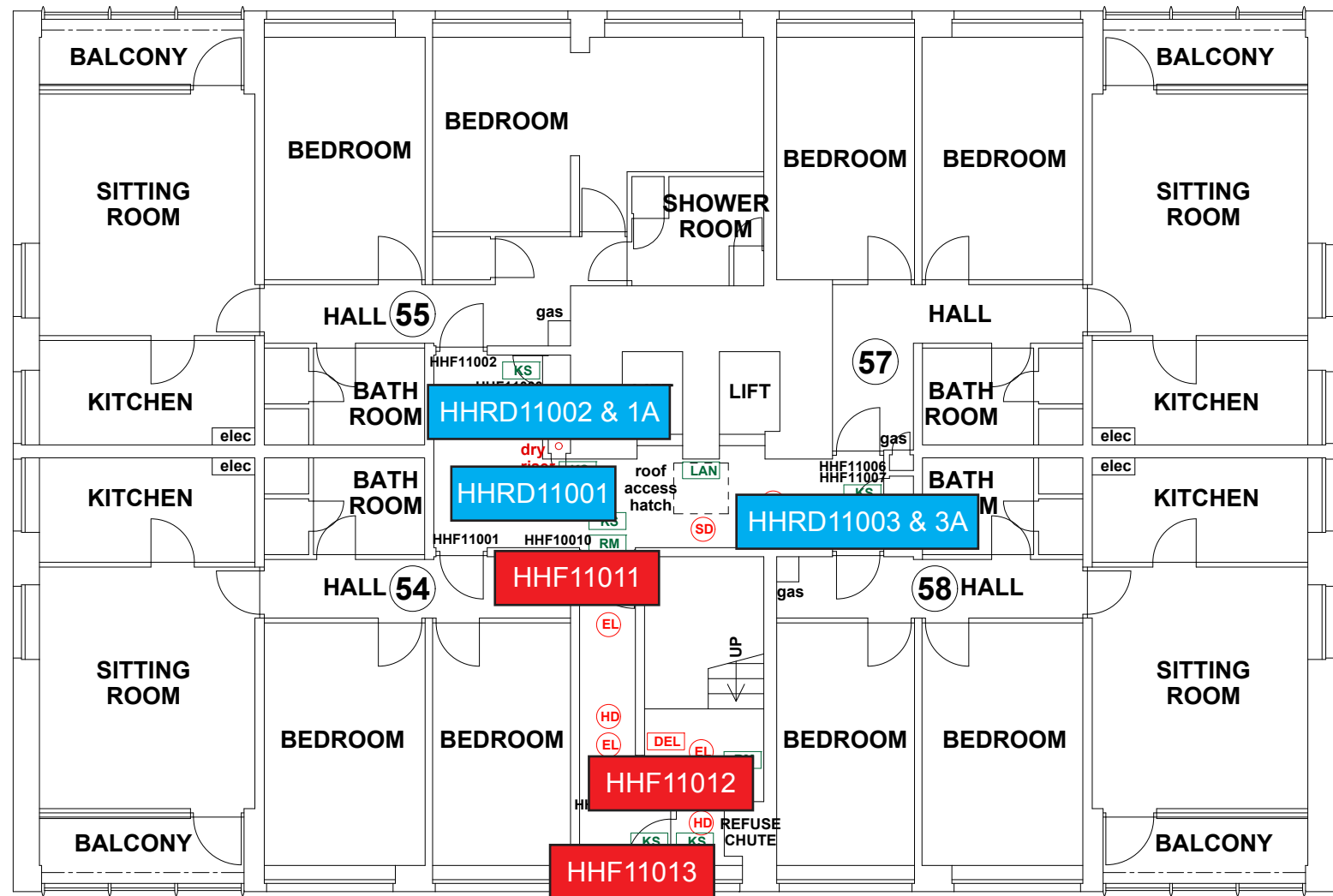
- FIRE DOORS
- RISER DOORS

REV	DATE	AMENDMENTS

PROJECT:	HOLLYHEDGE COURT
ADDRESS:	HOLLYHEDGE COURT WYTHENSHAW MANCHESTER M22 4QP
DWG NO.:	HH-C_220020L11
DWG TITLE:	LEVEL 10
DWG DATE:	NOVEMBER 2022
DWG SIZE:	SCALE 1:50 @ A1
TEL:	01762 977 147
DRAWN:	NR
CHECKED:	BR

THIS DRAWING IS TO BE READ IN CONJUNCTION WITH ALL RELEVANT SPECIFICATIONS AND DRAWINGS ISSUED. THIS DRAWING IS CORRECT AT TIME OF SURVEY

© COPYRIGHT FIRNTEC LTD 2022



- FIRE PRECAUTIONS LEGEND**
- ⊙ Break glass type fire alarm call point
  - ⊕ Heat sensitive detectors
  - ⊕ Smoke sensitive detectors
  - ⊕ Emergency light point.
  - ⊕ Firemans Switch
  - ⊕ Emergency Drop Key Access
  - ⊕ Fire alarm indicator / repeat panel
  - ⊕ Door/Access fitted with Gerda D1 Key lock
  - ⊕ Door/Access fitted with FB1 Key lock
  - ⊕ Door/Access fitted with FB2 Key lock
  - ⊕ Door/Access fitted with FB4 Key lock
  - ⊕ Door/Access fitted with FB11 Padlock
  - ⊕ Door/Access fitted with FB14 Padlock
  - ⊕ Dry Riser Outlet
  - ⊕ Digital electronic lock door entry/exit system
  - ⊕ Premises Information Box
  - ⊕ Permanently Open Vent
  - ⊕ Automatic Opening Vent
  - ⊕ Openable Vent
  - ⊕ Fire alarm sounder ('X' indicates integral flashing - Xenon light)
  - ⊕ CCTV Security Camera
  - ⊕ Fire Brigade Key Access
  - EXTINGUISH**
  - ⊕ 1.1m x 1.1m fire blanket - base of container to be 1500mm above floor level
  - ⊕ 6 litres AFFF aqueous foam extinguisher to BS:6575
  - ⊕ 9 litre wet chemical type extinguisher
  - ⊕ 4.5 litre dry powder type extinguisher
  - ⊕ 2 kg carbon dioxide type extinguisher
  - ⊕ 4.5 kg carbon dioxide type extinguisher
  - ⊕ 9 kg water type extinguisher
  - ⊕ 6 litre water type extinguisher
  - FIRE EXIT SIGNAGE**
  - ⊕ 'E' Signs to be externally illuminated by adjacent emergency light point
  - ⊕ 'FE' denotes as previous but illuminated as part of sign
  - ⊕ 'RM' denotes non illuminated sign
  - FIRE DOOR SIGNS AND FIRE ACTION NOTICES**
  - ⊕ Fire Action Notice
  - ⊕ Emergency Floor Plan
  - ⊕ "FIRE DOOR KEEP SHUT" sign
  - ⊕ "FIRE DOOR KEEP LOCKED" sign
  - ⊕ "AUTOMATIC FIRE DOOR KEEP CLEAR" or "FIRE EXIT KEEP CLEAR" sign
  - ⊕ "CAUTION, IN THE EVENT OF FIRE DO NOT USE THIS LIFT"
  - ⊕ DISTRIBUTION BOARD



# HOLLYHEDGE COURT ELEVENTH FLOOR

- FIRE DOORS
- RISER DOORS

REV	DATE	AMENDMENTS

WEB: WWW.FIRNTEC.COM  
EMAIL: CONTACT@FIRNTEC.COM  
ADDRESS: 1ST FLOOR, ENDEAVOUR HOUSE, PARKWAY CT, PLYMOUTH PL6 6LR  
TEL: 01752 977 147

PROJECT: **HOLLYHEDGE COURT**

ADDRESS: HOLLYHEDGE COURT  
WYTHENSHAW  
MANCHESTER  
M22 4QP

DWG NO.: HH-C\_22020L12  
DWG TITLE: LEVEL 11  
DWG DATE: NOVEMBER 2022  
DWG SIZE: SCALE 1:50 @ A1

DRAWN: NR | CHECKED: BR | 100%