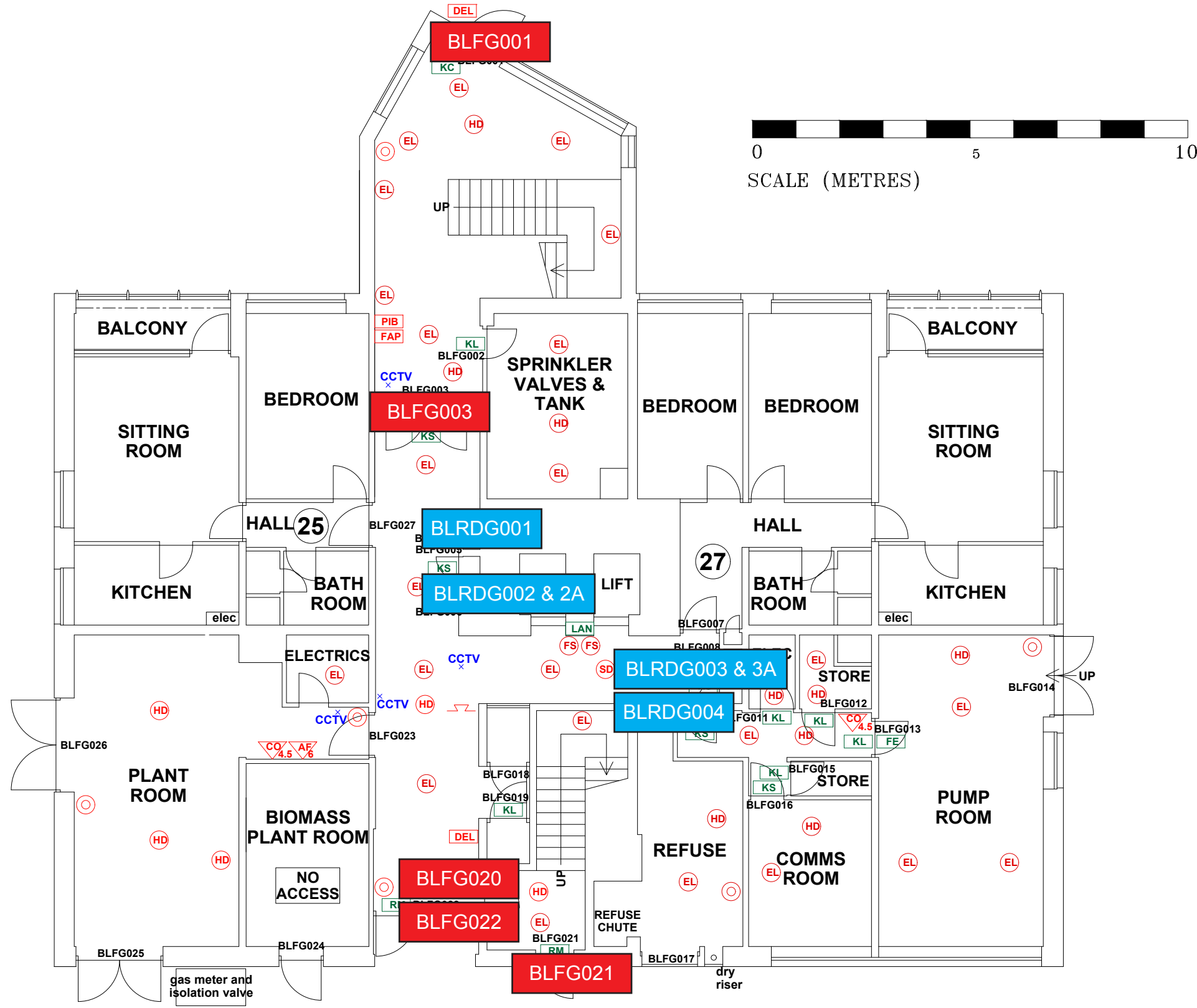


THIS DRAWING IS TO BE READ IN CONJUNCTION WITH ALL RELEVANT SPECIFICATIONS AND DRAWINGS ISSUED. THIS DRAWING IS CORRECT AT TIME OF SURVEY

© COPYRIGHT FIRNTEC LTD 2022



0 5 10
SCALE (METRES)

- FIRE PRECAUTIONS LEGEND**
- Break glass type fire alarm call point
 - ⊙ Heat sensitive detectors
 - ⊙ Smoke sensitive detectors
 - ⊙ Emergency light point.
 - ⊙ Firemans Switch
 - ⊙ Emergency Drop Key Access
 - ⊙ Fire alarm indicator / repeat panel
 - ⊙ Door/Access fitted with Gerda D1 Key lock
 - ⊙ Door/Access fitted with FB1 Key lock
 - ⊙ Door/Access fitted with FB2 Key lock
 - ⊙ Door/Access fitted with FB4 Key lock
 - ⊙ Door/Access fitted with FB11 Padlock
 - ⊙ Door/Access fitted with FB14 Padlock
 - ⊙ Dry Riser Outlet
 - ⊙ Digital electronic lock door entry/exit system
 - ⊙ Premises Information Box
 - ⊙ Permanently Open Vent
 - ⊙ Automatic Opening Vent
 - ⊙ Openable Vent
 - ⊙ Fire alarm sounder ("X" indicates integral flashing - Xenon light)
 - ⊙ CCTV Security Camera
 - ⊙ Fire Brigade Key Access
- EXTINGUISH**
- ⊙ 1.1m x 1.1m fire blanket - base of container to be 1500mm above floor level
 - ⊙ 6 litres AFFF aqueous foam extinguisher to BS:6875
 - ⊙ 9 litre wet chemical type extinguisher
 - ⊙ 4.5 litre dry powder type extinguisher
 - ⊙ 2 kg carbon dioxide type extinguisher
 - ⊙ 4.5 kg carbon dioxide type extinguisher
 - ⊙ 9 kg water type extinguisher
 - ⊙ 6 litre water type extinguisher
- FIRE EXIT SIGNAGE**
- ⊙ 'E' Signs to be externally illuminated by adjacent emergency light point
 - ⊙ 'FE' denotes as previous but illuminated as part of sign
 - ⊙ 'RM' denotes non illuminated sign
- FIRE DOOR SIGNS AND FIRE ACTION NOTICES**
- ⊙ Fire Action Notice
 - ⊙ Emergency Floor Plan
 - ⊙ "FIRE DOOR KEEP SHUT" sign
 - ⊙ "FIRE DOOR KEEP LOCKED" sign
 - ⊙ "AUTOMATIC FIRE DOOR KEEP CLEAR" or "FIRE EXIT KEEP CLEAR" sign
 - ⊙ "CAUTION, IN THE EVENT OF FIRE DO NOT USE THIS LIFT"
 - ⊙ DISTRIBUTION BOARD

FIRE DOORS

RISER DOORS

BROWNLEY COURT GROUND FLOOR

REV	DATE	AMENDMENTS

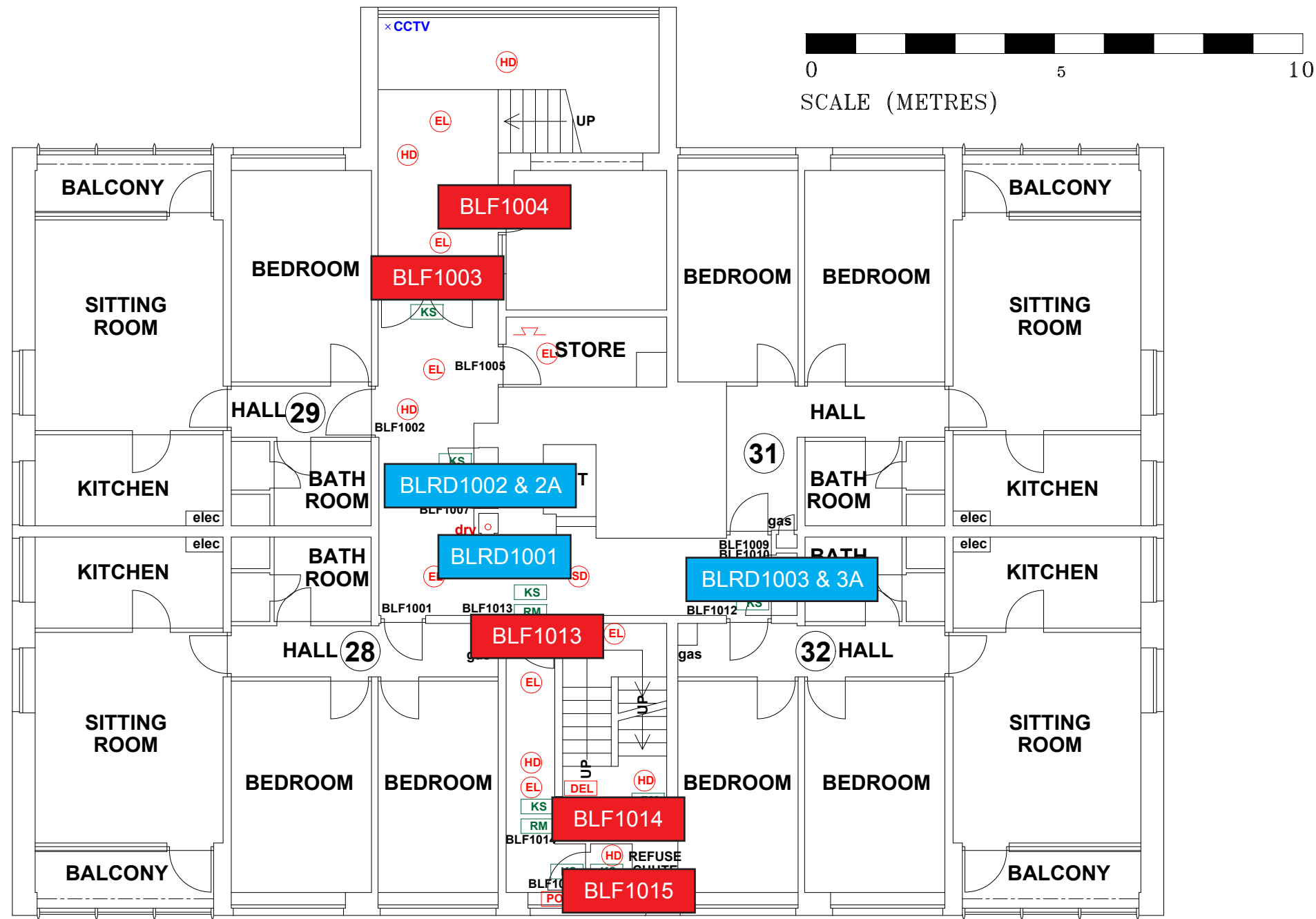
WEB: WWW.FIRNTEC.COM
EMAIL: CONTACTUS@FIRNTEC.COM
ADDRESS: 1ST FLOOR, ENDEAVOUR HOUSE, PARKWAY CT, PLWYOUTH PLE, BLK

PROJECT: BROWNLEY COURT
ADDRESS: BROWNLEY COURT, WYTHENSHAW, MANCHESTER, M22 1LD

DWG NO.: BR-C-220020-01
DWG TITLE: LEVEL 0
DWG DATE: NOVEMBER 2022
DWG SIZE: SCALE 1:50 @ A1
DRAWN: NR | CHECKED: BR | RBL

THIS DRAWING IS TO BE READ IN CONJUNCTION WITH ALL RELEVANT SPECIFICATIONS AND DRAWINGS ISSUED. THIS DRAWING IS CORRECT AT TIME OF SURVEY.

© COPYRIGHT FIRNTEC LTD 2022



- FIRE PRECAUTIONS LEGEND**
- Break glass type fire alarm call point
 - Heat sensitive detectors
 - Smoke sensitive detectors
 - Emergency light point
 - Firemans Switch
 - Emergency Drop Key Access
 - Fire alarm indicator / repeat panel
 - Door/Access fitted with Gerda D1 Key lock
 - Door/Access fitted with FB1 Key lock
 - Door/Access fitted with FB2 Key lock
 - Door/Access fitted with FB4 Key lock
 - Door/Access fitted with FB11 Padlock
 - Door/Access fitted with FB14 Padlock
 - Dry Riser Outlet
 - Digital electronic lock door entry/exit system
 - Premises Information Box
 - Permanently Open Vent
 - Automatic Opening Vent
 - Openable Vent
 - Fire alarm sounder ('X' indicates integral flashing - Xenon light)
 - CCTV Security Camera
 - Fire Brigade Key Access
- EXTINGUISH**
- 1.1m x 1.1m fire blanket - base of container to be 1500mm above floor level
 - 6 litres AFFF aqueous foam extinguisher to BS:6575
 - 9 litre wet chemical type extinguisher
 - 4.5 litre dry powder type extinguisher
 - 2 kg carbon dioxide type extinguisher
 - 4.5 kg carbon dioxide type extinguisher
 - 9 kg water type extinguisher
 - 6 litre water type extinguisher
- FIRE EXIT SIGNAGE**
- 'E' Signs to be externally illuminated by adjacent emergency light point
 - 'FE' denotes as previous but illuminated as part of sign
 - 'RM' denotes non illuminated sign
- FIRE DOOR SIGNS AND FIRE ACTION NOTICES**
- Fire Action Notice
 - Emergency Floor Plan
 - "FIRE DOOR KEEP SHUT" sign
 - "FIRE DOOR KEEP LOCKED" sign
 - "AUTOMATIC FIRE DOOR KEEP CLEAR" or "FIRE EXIT KEEP CLEAR" sign
 - "CAUTION, IN THE EVENT OF FIRE DO NOT USE THIS LIFT" sign
 - DISTRIBUTION BOARD

FIRE DOORS

RISER DOORS

BROWNLEY COURT FIRST FLOOR

REV	DATE	AMENDMENTS

PROJECT: BROWNLEY COURT

ADDRESS: BROWNLEY COURT
WYTHENSHAW
MANCHESTER
M22 6LD

DWG NO.: BR-C-220020L-02

DWG TITLE: LEVEL 1

DWG DATE: NOVEMBER 2022

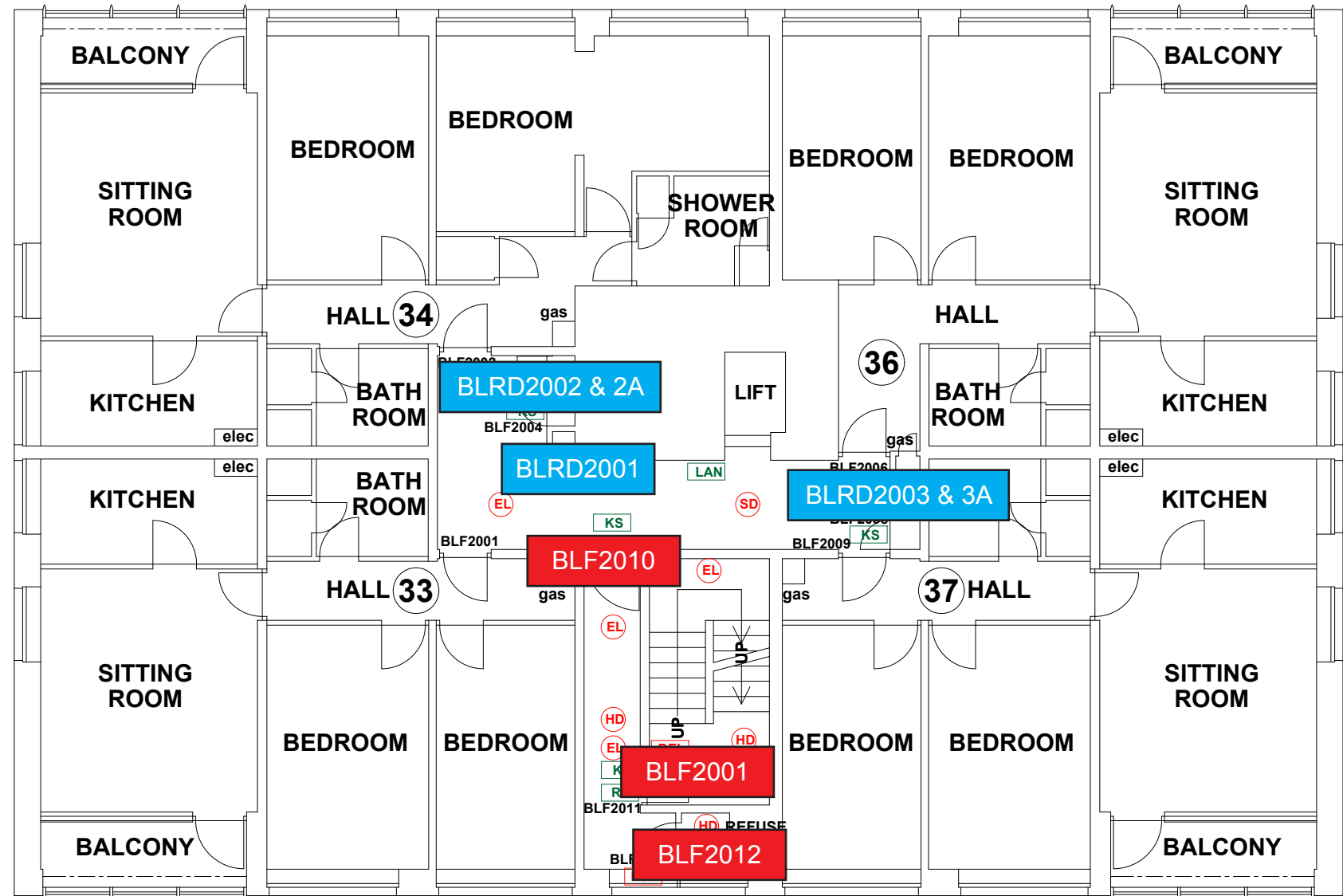
DWG SIZE: SCALE 1:50 @ A1

DRAWN: NR CHECKED: BR 19/11

WEB: WWW.FIRNTEC.COM
 EMAIL: CONTACTUS@FIRNTEC.COM
 ADDRESS: 1ST FLOOR, ENDEAVOUR HOUSE,
 PARKWAY CT, PLYMOUTH PL5 8LR
 TEL: 01752 977 147

THIS DRAWING IS TO BE READ IN CONJUNCTION WITH ALL RELEVANT SPECIFICATIONS AND DRAWINGS ISSUED. THIS DRAWING IS CORRECT AT TIME OF SURVEY

© COPYRIGHT FIRNTEC LTD 2022



- FIRE PRECAUTIONS LEGEND**
- ⊙ Break glass type fire alarm call point
 - HD Heat sensitive detectors
 - SD Smoke sensitive detectors
 - EL Emergency light point.
 - FS Firemans Switch
 - EDK Emergency Drop Key Access
 - FAP Fire alarm indicator / repeat panel
 - GD1 Door/Access fitted with Gerda D1 Key lock
 - FB1 Door/Access fitted with FB1 Key lock
 - FB2 Door/Access fitted with FB2 Key lock
 - FB4 Door/Access fitted with FB4 Key lock
 - FB11 Door/Access fitted with FB11 Padlock
 - FB14 Door/Access fitted with FB14 Padlock
 - DRO Dry Riser Outlet
 - DEL Digital electronic lock door entry/exit system
 - PB Premises Information Box
 - POV Permanently Open Vent
 - AOV Automatic Opening Vent
 - OV Openable Vent
 - SA Fire alarm sounder ('X' indicates integral flashing - Xenon light)
 - CCTV CCTV Security Camera
 - FB Fire Brigade Key Access
- EXTINGUISH**
- BLN 1.1m x 1.1m fire blanket - base of container to be 1500mm above floor level
 - 6 litres AFFF aqueous foam extinguisher to BS:6575
 - 9 litre wet chemical type extinguisher
 - 4.5 litre dry powder type extinguisher
 - 2 kg carbon dioxide type extinguisher
 - 4.5 kg carbon dioxide type extinguisher
 - 9 kg water type extinguisher
 - 6 litre water type extinguisher
- FIRE EXIT SIGNAGE**
- E' Signs to be externally illuminated by adjacent emergency light point
 - FE 'FE' denotes as previous but illuminated as part of sign
 - RM 'RM' denotes non illuminated sign
- FIRE DOOR SIGNS AND FIRE ACTION NOTICES**
- FAN Fire Action Notice
 - EFP Emergency Floor Plan
 - KS "FIRE DOOR KEEP SHUT" sign
 - KL "FIRE DOOR KEEP LOCKED" sign
 - KC "AUTOMATIC FIRE DOOR KEEP CLEAR" or "FIRE EXIT KEEP CLEAR" sign
 - LAN "CAUTION, IN THE EVENT OF FIRE DO NOT USE THIS LIFT"
 - DB DISTRIBUTION BOARD

FIRE DOORS

RISER DOORS

BROWNLEY COURT SECOND FLOOR

REV	DATE	AMENDMENTS

PROJECT: BROWNLEY COURT

ADDRESS: BROWNLEY COURT
WYTHENSHAW
MANCHESTER
M22 6LD

DWG NO.: BR-C-220020L03

DWG TITLE: LEVEL 2

DWG DATE: NOVEMBER 2022

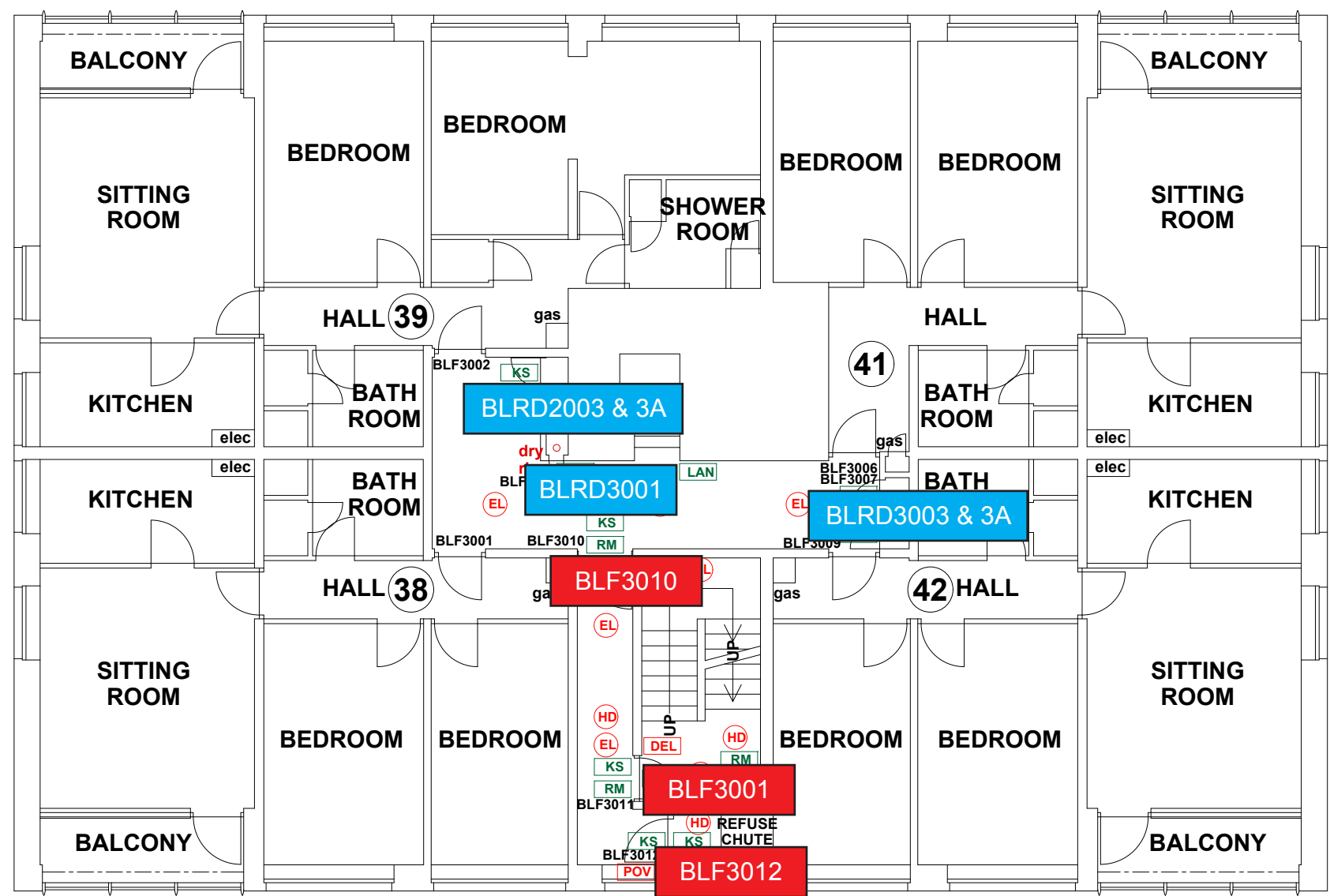
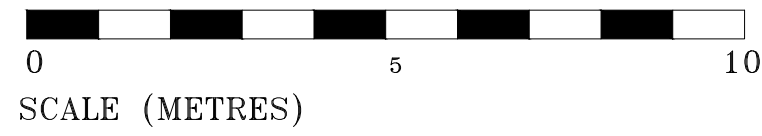
DWG SIZE: SCALE 1:50 @ A1

DRAWN: NR | CHECKED: BR

WEB: WWW.FIRNTEC.COM
 EMAIL: CONTACTUS@FIRNTEC.COM
 ADDRESS: 1ST FLOOR, ENDEAVOUR HOUSE,
 PARKWAY CT, PLYMOUTH PL5 8LR
 TEL: 01752 977 147

THIS DRAWING IS TO BE READ IN CONJUNCTION WITH ALL RELEVANT SPECIFICATIONS AND DRAWINGS ISSUED. THIS DRAWING IS CORRECT AT TIME OF SURVEY

© COPYRIGHT FIRNTEC LTD 2022



- FIRE PRECAUTIONS LEGEND**
- Break glass type fire alarm call point
 - Heat sensitive detectors
 - Smoke sensitive detectors
 - Emergency light point.
 - Firemans Switch
 - Emergency Drop Key Access
 - Fire alarm indicator / repeat panel
 - Door/Access fitted with Gerda D1 Key lock
 - Door/Access fitted with FB1 Key lock
 - Door/Access fitted with FB2 Key lock
 - Door/Access fitted with FB4 Key lock
 - Door/Access fitted with FB11 Padlock
 - Door/Access fitted with FB14 Padlock
 - Dry Riser Outlet
 - Digital electronic lock door entry/exit system
 - Premises Information Box
 - Permanently Open Vent
 - Automatic Opening Vent
 - Openable Vent
 - Fire alarm sounder ('X' indicates integral flashing - Xenon light)
 - CCTV Security Camera
 - Fire Brigade Key Access
 - EXTINGUISH**
 - 1.1m x 1.1m fire blanket - base of container to be 1500mm above floor level
 - 6 litres AFFF aqueous foam extinguisher to BS:6575
 - 9 litre wet chemical type extinguisher
 - 4.5 litre dry powder type extinguisher
 - 2 kg carbon dioxide type extinguisher
 - 4.5 kg carbon dioxide type extinguisher
 - 9 kg water type extinguisher
 - 6 litre water type extinguisher
 - FIRE EXIT SIGNAGE**
 - 'E' Signs to be externally illuminated by adjacent emergency light point
 - 'FE' denotes as previous but illuminated as part of sign
 - 'RM' denotes non illuminated sign
 - FIRE DOOR SIGNS AND FIRE ACTION NOTICES**
 - Fire Action Notice
 - Emergency Floor Plan
 - "FIRE DOOR KEEP SHUT" sign
 - "FIRE DOOR KEEP LOCKED" sign
 - "AUTOMATIC FIRE DOOR KEEP CLEAR" or "FIRE EXIT KEEP CLEAR" sign
 - "CAUTION, IN THE EVENT OF FIRE DO NOT USE THIS LIFT"
 - DISTRIBUTION BOARD

FIRE DOORS

RISER DOORS

BROWNLEY COURT THIRD FLOOR

REV	DATE	AMENDMENTS

PROJECT: BROWNLEY COURT

ADDRESS: BROWNLEY COURT
WYTHENSHAW
MANCHESTER
M22 3UD

DWG NO.: BR-C-220020L04

DWG TITLE: LEVEL 3

DWG DATE: NOVEMBER 2022

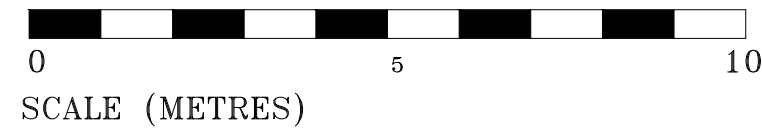
DWG SIZE: SCALE 1:50 @ A1

DRAWN: NR | CHECKED: BR

WEB: WWW.FIRNTEC.COM
 EMAIL: CONTACTUS@FIRNTEC.COM
 ADDRESS: 1ST FLOOR, ENDEAVOUR HOUSE, PARKWAY CT, FALMOUTH PL 6, BR
 TEL: 01752 977 147

THIS DRAWING IS TO BE READ IN CONJUNCTION WITH ALL RELEVANT SPECIFICATIONS AND DRAWINGS ISSUED. THIS DRAWING IS CORRECT AT TIME OF SURVEY

© COPYRIGHT FIRNTEC LTD 2022



- FIRE PRECAUTIONS LEGEND**
- Break glass type fire alarm call point
 - Heat sensitive detectors
 - Smoke sensitive detectors
 - Emergency light point.
 - Firemans Switch
 - Emergency Drop Key Access
 - Fire alarm indicator / repeat panel
 - Door/Access fitted with Gerda D1 Key lock
 - Door/Access fitted with FB1 Key lock
 - Door/Access fitted with FB2 Key lock
 - Door/Access fitted with FB4 Key lock
 - Door/Access fitted with FB11 Padlock
 - Door/Access fitted with FB14 Padlock
 - Dry Riser Outlet
 - Digital electronic lock door entry/exit system
 - Premises Information Box
 - Permanently Open Vent
 - Automatic Opening Vent
 - Openable Vent
 - Fire alarm sounder ('X' indicates integral flashing - Xenon light)
 - CCTV Security Camera
 - Fire Brigade Key Access
 - EXTINGUISH**
 - 1.1m x 1.1m fire blanket - base of container to be 1500mm above floor level
 - 6 litres AFFF aqueous foam extinguisher to BS:6575
 - 9 litre wet chemical type extinguisher
 - 4.5 litre dry powder type extinguisher
 - 2 kg carbon dioxide type extinguisher
 - 4.5 kg carbon dioxide type extinguisher
 - 9 kg water type extinguisher
 - 6 litre water type extinguisher
 - FIRE EXIT SIGNAGE**
 - 'E' Signs to be externally illuminated by adjacent emergency light point
 - 'FE' denotes as previous but illuminated as part of sign
 - 'RM' denotes non illuminated sign
 - FIRE DOOR SIGNS AND FIRE ACTION NOTICES**
 - Fire Action Notice
 - Emergency Floor Plan
 - "FIRE DOOR KEEP SHUT" sign
 - "FIRE DOOR KEEP LOCKED" sign
 - "AUTOMATIC FIRE DOOR KEEP CLEAR" or "FIRE EXIT KEEP CLEAR" sign
 - "CAUTION, IN THE EVENT OF FIRE DO NOT USE THIS LIFT"
 - DISTRIBUTION BOARD

FIRE DOORS

RISER DOORS

BROWNLEY COURT FOURTH FLOOR

REV	DATE	AMENDMENTS

WEB: WWW.FIRNTEC.COM
EMAIL: CONTACTUS@FIRNTEC.COM
ADDRESS: 1ST FLOOR, BRIDGEFOUR HOUSE, PARKWAY CT, PLYMOUTH PL4 8LR
TEL: 01752 977 147

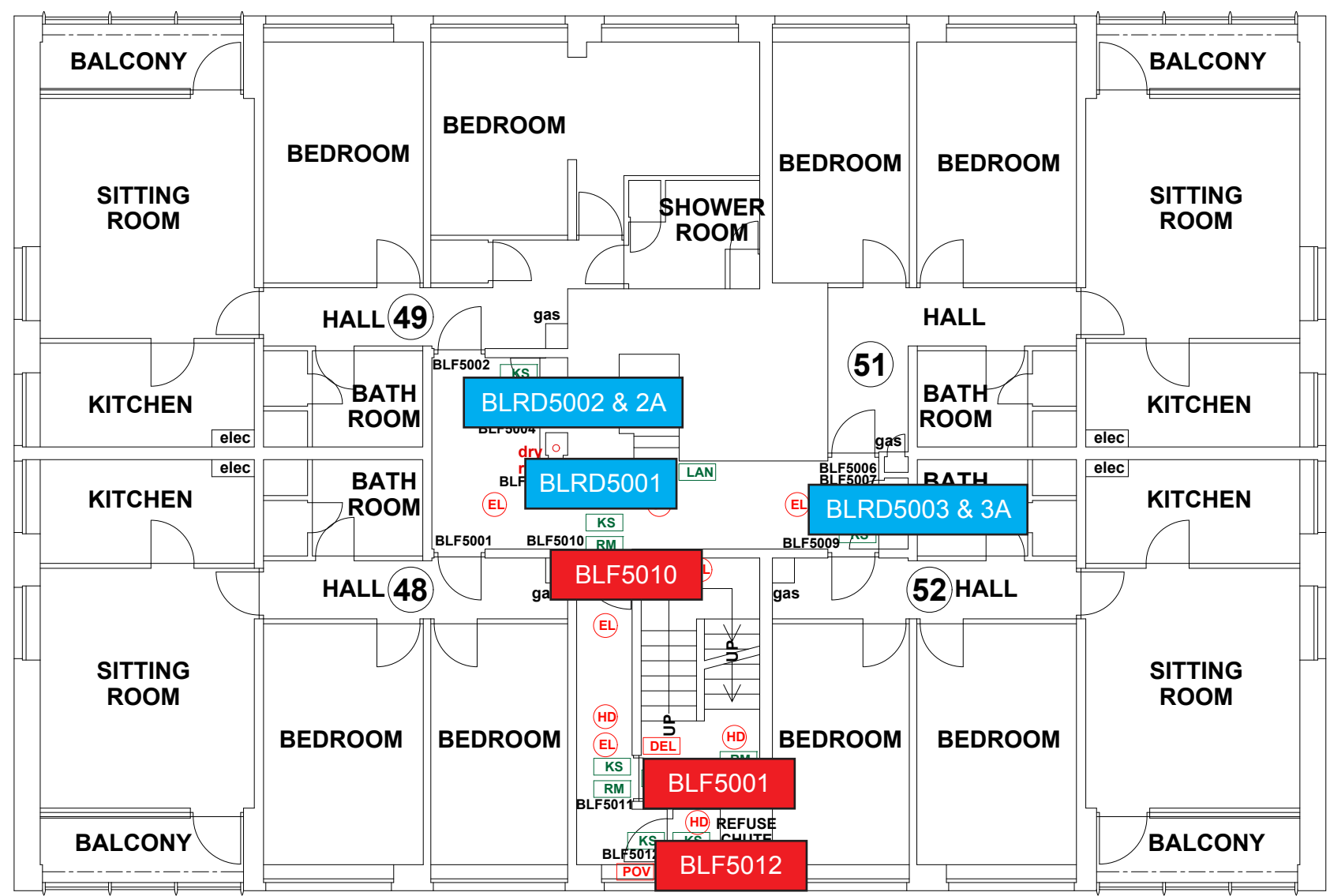
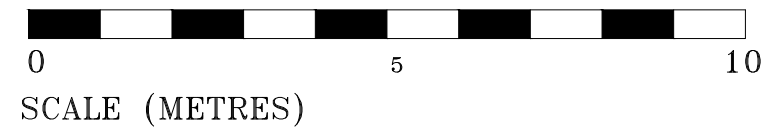
PROJECT: BROWNLEY COURT

ADDRESS: BROWNLEY COURT
WYTHENSHAW
MANCHESTER
M22 8UD

DWG NO.: BR-C_220020L05
DWG TITLE: LEVEL 4
DWG DATE: NOVEMBER 2022
DWG SIZE: SCALE 1:50 @ A1
DRAWN: NR | CHECKED: BR | ISSUE

THIS DRAWING IS TO BE READ IN CONJUNCTION WITH ALL RELEVANT SPECIFICATIONS AND DRAWINGS ISSUED. THIS DRAWING IS CORRECT AT TIME OF SURVEY

© COPYRIGHT FIRNTEC LTD 2022



- FIRE PRECAUTIONS LEGEND**
- Break glass type fire alarm call point
 - Heat sensitive detectors
 - Smoke sensitive detectors
 - Emergency light point.
 - Firemans Switch
 - Emergency Drop Key Access
 - Fire alarm indicator / repeat panel
 - Door/Access fitted with Gerda D1 Key lock
 - Door/Access fitted with FB1 Key lock
 - Door/Access fitted with FB2 Key lock
 - Door/Access fitted with FB4 Key lock
 - Door/Access fitted with FB11 Padlock
 - Door/Access fitted with FB14 Padlock
 - Dry Riser Outlet
 - Digital electronic lock door entry/exit system
 - Premises Information Box
 - Permanently Open Vent
 - Automatic Opening Vent
 - Openable Vent
 - Fire alarm sounder ('X' indicates integral flashing - Xenon light)
 - CCTV Security Camera
 - Fire Brigade Key Access
 - EXTINGUISH**
 - 1.1m x 1.1m fire blanket - base of container to be 1500mm above floor level
 - 6 litres AFFF aqueous foam extinguisher to BS:6575
 - 9 litre wet chemical type extinguisher
 - 4.5 litre dry powder type extinguisher
 - 2 kg carbon dioxide type extinguisher
 - 4.5 kg carbon dioxide type extinguisher
 - 9 kg water type extinguisher
 - 6 litre water type extinguisher
 - FIRE EXIT SIGNAGE**
 - 'E' Signs to be externally illuminated by adjacent emergency light point
 - 'FE' denotes as previous but illuminated as part of sign
 - 'RM' denotes non illuminated sign
 - FIRE DOOR SIGNS AND FIRE ACTION NOTICES**
 - Fire Action Notice
 - Emergency Floor Plan
 - "FIRE DOOR KEEP SHUT" sign
 - "FIRE DOOR KEEP LOCKED" sign
 - "AUTOMATIC FIRE DOOR KEEP CLEAR" or "FIRE EXIT KEEP CLEAR" sign
 - "CAUTION, IN THE EVENT OF FIRE DO NOT USE THIS LIFT" sign
 - DISTRIBUTION BOARD

FIRE DOORS

RISER DOORS

BROWNLEY COURT FIFTH FLOOR

REV	DATE	AMENDMENTS

PROJECT: BROWNLEY COURT

ADDRESS: BROWNLEY COURT
WYTHENSHAW
MANCHESTER
M22 8UD

DWG NO.: BR-C_220020L_06

DWG TITLE: LEVEL 5

DWG DATE: NOVEMBER 2022

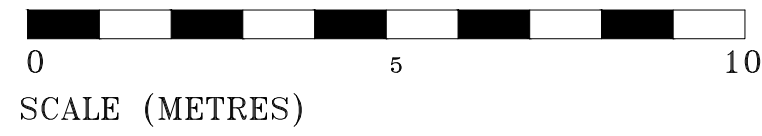
DWG SIZE: SCALE 1:50 @ A1

DRAWN: NR CHECKED: BR DATE:

WEB: WWW.FIRNTEC.COM
 EMAIL: CONTACT@FIRNTEC.COM
 ADDRESS: 1ST FLOOR, BRIDGEHOUR HOUSE,
 FAIRWAY CT, PLYMOUTH PL4 8LR
 TEL: 01752 977 147

THIS DRAWING IS TO BE READ IN CONJUNCTION WITH ALL RELEVANT SPECIFICATIONS AND DRAWINGS ISSUED. THIS DRAWING IS CORRECT AT TIME OF SURVEY

© COPYRIGHT FIRNTEC LTD 2022



- FIRE PRECAUTIONS LEGEND**
- Break glass type fire alarm call point
 - Heat sensitive detectors
 - Smoke sensitive detectors
 - Emergency light point.
 - Firemans Switch
 - Emergency Drop Key Access
 - Fire alarm indicator / repeat panel
 - Door/Access fitted with Gerda D1 Key lock
 - Door/Access fitted with FB1 Key lock
 - Door/Access fitted with FB2 Key lock
 - Door/Access fitted with FB4 Key lock
 - Door/Access fitted with FB11 Padlock
 - Door/Access fitted with FB14 Padlock
 - Dry Riser Outlet
 - Digital electronic lock door entry/exit system
 - Premises Information Box
 - Permanently Open Vent
 - Automatic Opening Vent
 - Openable Vent
 - Fire alarm sounder ('X' indicates integral flashing - Xenon light)
 - CCTV Security Camera
 - Fire Brigade Key Access
 - EXTINGUISH**
 - 1.1m x 1.1m fire blanket - base of container to be 1500mm above floor level
 - 6 litres AFFF aqueous foam extinguisher to BS:6575
 - 9 litre wet chemical type extinguisher
 - 4.5 litre dry powder type extinguisher
 - 2 kg carbon dioxide type extinguisher
 - 4.5 kg carbon dioxide type extinguisher
 - 9 kg water type extinguisher
 - 6 litre water type extinguisher
 - FIRE EXIT SIGNAGE**
 - 'E' Signs to be externally illuminated by adjacent emergency light point
 - 'FE' denotes as previous but illuminated as part of sign
 - 'RM' denotes non illuminated sign
 - FIRE DOOR SIGNS AND FIRE ACTION NOTICES**
 - Fire Action Notice
 - Emergency Floor Plan
 - "FIRE DOOR KEEP SHUT" sign
 - "FIRE DOOR KEEP LOCKED" sign
 - "AUTOMATIC FIRE DOOR KEEP CLEAR" or "FIRE EXIT KEEP CLEAR" sign
 - "CAUTION, IN THE EVENT OF FIRE DO NOT USE THIS LIFT"
 - DISTRIBUTION BOARD

FIRE DOORS

RISER DOORS

BROWNLEY COURT SIXTH FLOOR

REV	DATE	AMENDMENTS

PROJECT: BROWNLEY COURT

ADDRESS: BROWNLEY COURT
WYTHENSHAW
MANCHESTER
M22 8UD

DWG NO.: BR-C_22020L07

DWG TITLE: LEVEL 6

DWG DATE: NOVEMBER 2022

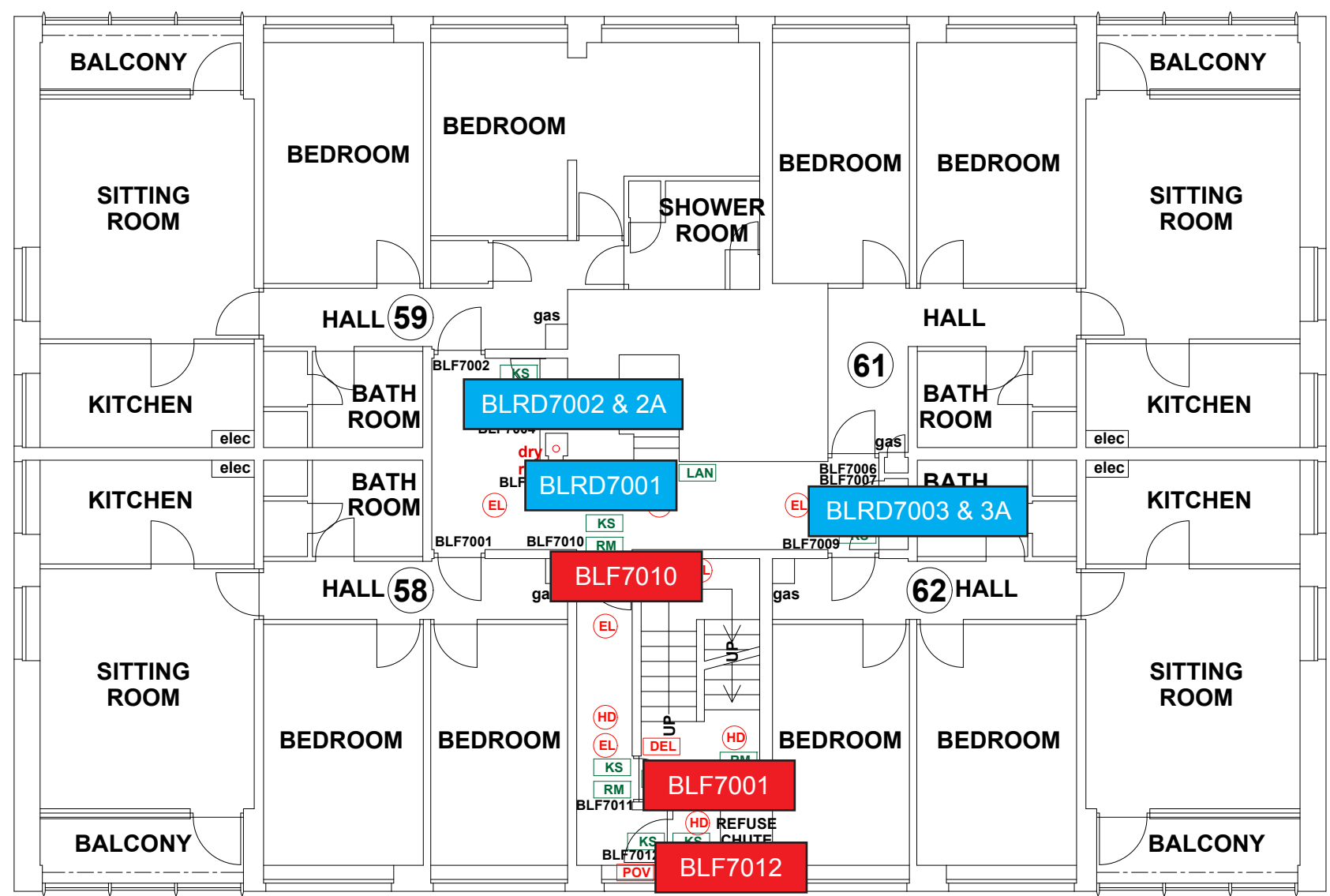
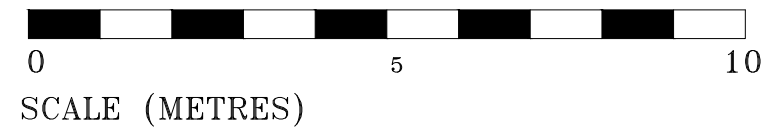
DWG SIZE: SCALE 1:50 @ A1

DRAWN: NR CHECKED: BR

WEB: WWW.FIRNTEC.COM
 EMAIL: CONTACTUS@FIRNTEC.COM
 ADDRESS: 1ST FLOOR, ENDEAVOUR HOUSE, FAIRWAY CT, PLUMBOOTH PLU BLR
 TEL: 01762 977 147

THIS DRAWING IS TO BE READ IN CONJUNCTION WITH ALL RELEVANT SPECIFICATIONS AND DRAWINGS ISSUED. THIS DRAWING IS CORRECT AT TIME OF SURVEY

© COPYRIGHT FIRNTEC LTD 2022



- FIRE PRECAUTIONS LEGEND**
- Break glass type fire alarm call point
 - Heat sensitive detectors
 - Smoke sensitive detectors
 - Emergency light point.
 - Firemans Switch
 - Emergency Drop Key Access
 - Fire alarm indicator / repeat panel
 - Door/Access fitted with Gerda D1 Key lock
 - Door/Access fitted with FB1 Key lock
 - Door/Access fitted with FB2 Key lock
 - Door/Access fitted with FB4 Key lock
 - Door/Access fitted with FB11 Padlock
 - Door/Access fitted with FB14 Padlock
 - Dry Riser Outlet
 - Digital electronic lock door entry/exit system
 - Premises Information Box
 - Permanently Open Vent
 - Automatic Opening Vent
 - Openable Vent
 - Fire alarm sounder ('X' indicates integral flashing - Xenon light)
 - CCTV Security Camera
 - Fire Brigade Key Access
 - EXTINGUISH**
 - 1.1m x 1.1m fire blanket - base of container to be 1500mm above floor level
 - 6 litres AFFF aqueous foam extinguisher to BS:6575
 - 9 litre wet chemical type extinguisher
 - 4.5 litre dry powder type extinguisher
 - 2 kg carbon dioxide type extinguisher
 - 4.5 kg carbon dioxide type extinguisher
 - 9 kg water type extinguisher
 - 6 litre water type extinguisher
 - FIRE EXIT SIGNAGE**
 - 'E' Signs to be externally illuminated by adjacent emergency light point
 - 'FE' denotes as previous but illuminated as part of sign
 - 'RM' denotes non illuminated sign
 - FIRE DOOR SIGNS AND FIRE ACTION NOTICES**
 - Fire Action Notice
 - Emergency Floor Plan
 - "FIRE DOOR KEEP SHUT" sign
 - "FIRE DOOR KEEP LOCKED" sign
 - "AUTOMATIC FIRE DOOR KEEP CLEAR" or "FIRE EXIT KEEP CLEAR" sign
 - "CAUTION, IN THE EVENT OF FIRE DO NOT USE THIS LIFT" sign
 - DISTRIBUTION BOARD

FIRE DOORS

RISER DOORS

BROWNLEY COURT SEVENTH FLOOR

REV	DATE	AMENDMENTS

PROJECT: BROWNLEY COURT

ADDRESS: BROWNLEY COURT
WYTHENSHAW
MANCHESTER
M22 8UD

DWG NO.: BR-C_220020_L08

DWG TITLE: LEVEL 7

DWG DATE: NOVEMBER 2022

DWG SIZE: SCALE 1:50 @ A1

DRAWN: NR CHECKED: BR DATE:

WEB: WWW.FIRNTEC.COM
EMAIL: CONTACT@FIRNTEC.COM
ADDRESS: 1ST FLOOR, BRIDGEHOUR HOUSE,
FAIRWAY CT, PLYMOUTH PL4 8LR
TEL: 01752 977 147

THIS DRAWING IS TO BE READ IN CONJUNCTION WITH ALL RELEVANT SPECIFICATIONS AND DRAWINGS ISSUED. THIS DRAWING IS CORRECT AT TIME OF SURVEY

© COPYRIGHT FIRNTEC LTD 2022



- FIRE PRECAUTIONS LEGEND**
- Break glass type fire alarm call point
 - Heat sensitive detectors
 - Smoke sensitive detectors
 - Emergency light point.
 - Firemans Switch
 - Emergency Drop Key Access
 - Fire alarm indicator / repeat panel
 - Door/Access fitted with Gerda D1 Key lock
 - Door/Access fitted with FB1 Key lock
 - Door/Access fitted with FB2 Key lock
 - Door/Access fitted with FB4 Key lock
 - Door/Access fitted with FB11 Padlock
 - Door/Access fitted with FB14 Padlock
 - Dry Riser Outlet
 - Digital electronic lock door entry/exit system
 - Premises Information Box
 - Permanently Open Vent
 - Automatic Opening Vent
 - Openable Vent
 - Fire alarm sounder ('X' indicates integral flashing - Xenon light)
 - CCTV Security Camera
 - Fire Brigade Key Access
 - EXTINGUISH**
 - 1.1m x 1.1m fire blanket - base of container to be 1500mm above floor level
 - 6 litres AFFF aqueous foam extinguisher to BS:6575
 - 9 litre wet chemical type extinguisher
 - 4.5 litre dry powder type extinguisher
 - 2 kg carbon dioxide type extinguisher
 - 4.5 kg carbon dioxide type extinguisher
 - 9 kg water type extinguisher
 - 6 litre water type extinguisher
 - FIRE EXIT SIGNAGE**
 - 'E' Signs to be externally illuminated by adjacent emergency light point
 - 'FE' denotes as previous but illuminated as part of sign
 - 'RM' denotes non illuminated sign
 - FIRE DOOR SIGNS AND FIRE ACTION NOTICES**
 - Fire Action Notice
 - Emergency Floor Plan
 - "FIRE DOOR KEEP SHUT" sign
 - "FIRE DOOR KEEP LOCKED" sign
 - "AUTOMATIC FIRE DOOR KEEP CLEAR" or "FIRE EXIT KEEP CLEAR" sign
 - "CAUTION, IN THE EVENT OF FIRE DO NOT USE THIS LIFT" sign
 - DISTRIBUTION BOARD

FIRE DOORS

RISER DOORS

BROWNLEY COURT EIGHTH FLOOR

REV	DATE	AMENDMENTS

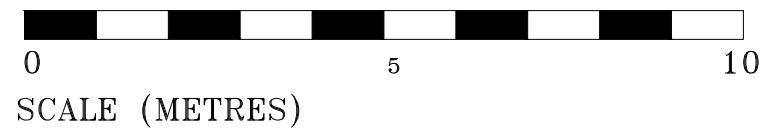
WEB: WWW.FIRNTEC.COM
EMAIL: CONTACTUS@FIRNTEC.COM
ADDRESS: 1ST FLOOR, ENDEAVOUR HOUSE, PARKWAY CT, PLYMOUTH PL6 6LR
TEL: 01752 977 147

PROJECT: BROWNLEY COURT
ADDRESS: BROWNLEY COURT, WYTHENSHAW, MANCHESTER, M22 8UD

DWG NO.: BR-C-22020L09
DWG TITLE: ROOF
DWG DATE: NOVEMBER 2022
DWG SIZE: SCALE 1:50 @ A1
DRAWN: NR | CHECKED: BR

THIS DRAWING IS TO BE READ IN CONJUNCTION WITH ALL RELEVANT SPECIFICATIONS AND DRAWINGS ISSUED. THIS DRAWING IS CORRECT AT TIME OF SURVEY

© COPYRIGHT FIRNTEC LTD 2022



- FIRE PRECAUTIONS LEGEND**
- Break glass type fire alarm call point
 - Heat sensitive detectors
 - Smoke sensitive detectors
 - Emergency light point.
 - Firemans Switch
 - Emergency Drop Key Access
 - Fire alarm indicator / repeat panel
 - Door/Access fitted with Gerda D1 Key lock
 - Door/Access fitted with FB1 Key lock
 - Door/Access fitted with FB2 Key lock
 - Door/Access fitted with FB4 Key lock
 - Door/Access fitted with FB11 Padlock
 - Door/Access fitted with FB14 Padlock
 - Dry Riser Outlet
 - Digital electronic lock door entry/exit system
 - Premises Information Box
 - Permanently Open Vent
 - Automatic Opening Vent
 - Openable Vent
 - Fire alarm sounder ('X' indicates integral flashing - Xenon light)
 - CCTV Security Camera
 - Fire Brigade Key Access
- EXTINGUISH**
- 1.1m x 1.1m fire blanket - base of container to be 1500mm above floor level
 - 6 litre AFFF aqueous foam extinguisher to BS:6575
 - 9 litre wet chemical type extinguisher
 - 4.5 litre dry powder type extinguisher
 - 2 kg carbon dioxide type extinguisher
 - 4.5 kg carbon dioxide type extinguisher
 - 9 kg water type extinguisher
 - 6 litre water type extinguisher
- FIRE EXIT SIGNAGE**
- 'E' Signs to be externally illuminated by adjacent emergency light point
 - 'FE' denotes as previous but illuminated as part of sign
 - 'RM' denotes non illuminated sign
- FIRE DOOR SIGNS AND FIRE ACTION NOTICES**
- Fire Action Notice
 - Emergency Floor Plan
 - "FIRE DOOR KEEP SHUT" sign
 - "FIRE DOOR KEEP LOCKED" sign
 - "AUTOMATIC FIRE DOOR KEEP CLEAR" or "FIRE EXIT KEEP CLEAR" sign
 - "CAUTION, IN THE EVENT OF FIRE DO NOT USE THIS LIFT" sign
 - DISTRIBUTION BOARD

FIRE DOORS

RISER DOORS

BROWNLEY COURT NINTH FLOOR

REV	DATE	AMENDMENTS

PROJECT: BROWNLEY COURT

ADDRESS: BROWNLEY COURT
WYTHENSHAW
MANCHESTER
M22 5LD

DWG NO.: BR-C-220020L10

DWG TITLE: LEVEL 9

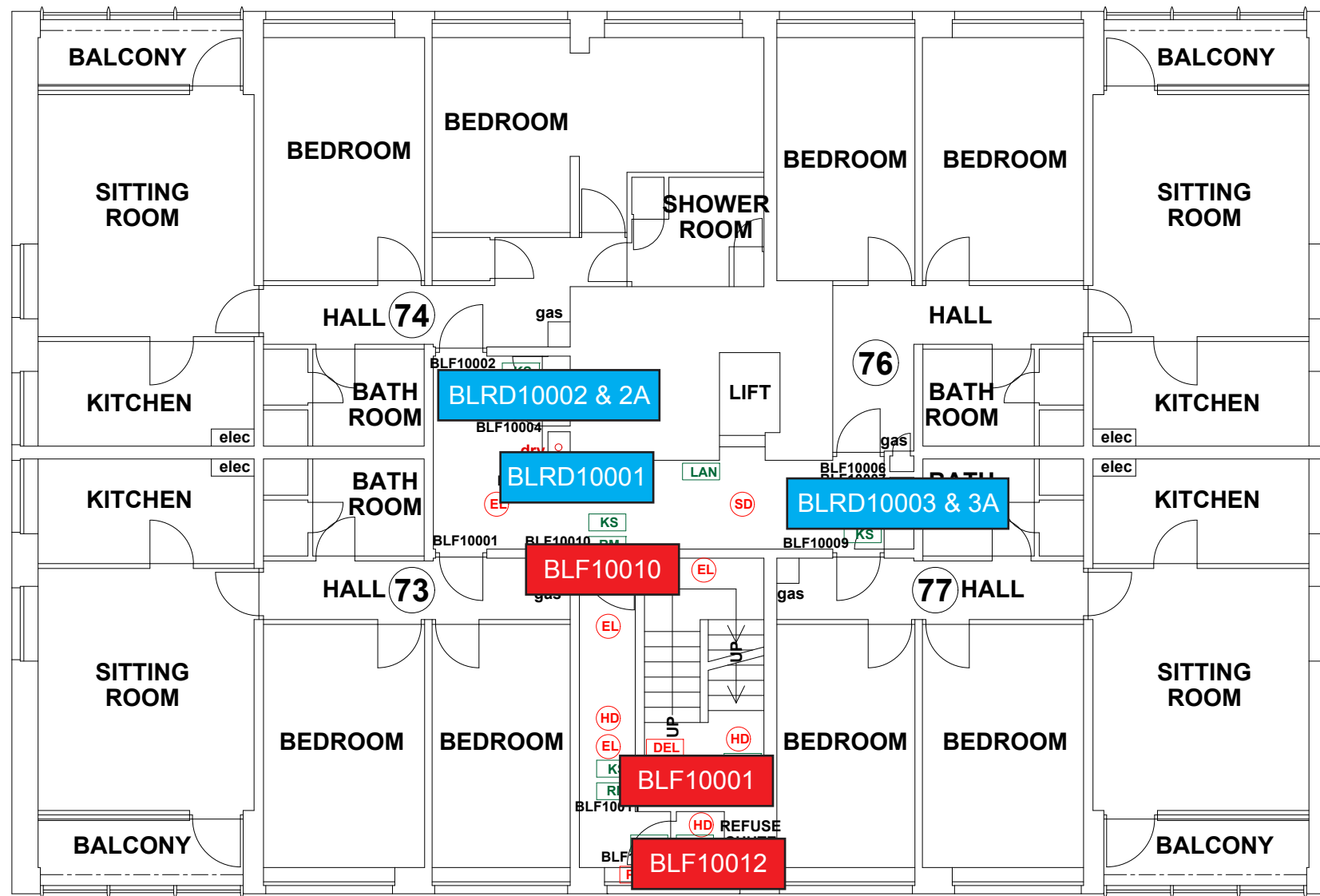
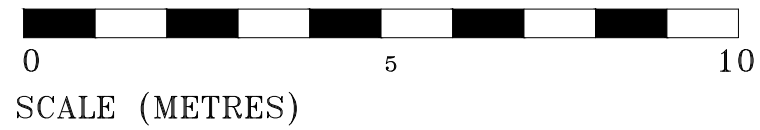
DWG DATE: NOVEMBER 2022

DWG SIZE: SCALE 1:50 @ A1

DRAWN: NR CHECKED: BR

THIS DRAWING IS TO BE READ IN CONJUNCTION WITH ALL RELEVANT SPECIFICATIONS AND DRAWINGS ISSUED. THIS DRAWING IS CORRECT AT TIME OF SURVEY

© COPYRIGHT FIRNTEC LTD 2022



- FIRE PRECAUTIONS LEGEND**
- Break glass type fire alarm call point
 - Heat sensitive detectors
 - Smoke sensitive detectors
 - Emergency light point.
 - Firemans Switch
 - Emergency Drop Key Access
 - Fire alarm indicator / repeat panel
 - Door/Access fitted with Gerda D1 Key lock
 - Door/Access fitted with FB1 Key lock
 - Door/Access fitted with FB2 Key lock
 - Door/Access fitted with FB4 Key lock
 - Door/Access fitted with FB11 Padlock
 - Door/Access fitted with FB14 Padlock
 - Dry Riser Outlet
 - Digital electronic lock door entry/exit system
 - Premises Information Box
 - Permanently Open Vent
 - Automatic Opening Vent
 - Openable Vent
 - Fire alarm sounder ('X' indicates integral flashing - Xenon light)
 - CCTV Security Camera
 - Fire Brigade Key Access
 - EXTINGUISH**
 - 1.1m x 1.1m fire blanket - base of container to be 1500mm above floor level
 - 6 litre AFFF aqueous foam extinguisher to BS:6575
 - 9 litre wet chemical type extinguisher
 - 4.5 litre dry powder type extinguisher
 - 2 kg carbon dioxide type extinguisher
 - 4.5 kg carbon dioxide type extinguisher
 - 9 kg water type extinguisher
 - 6 litre water type extinguisher
 - FIRE EXIT SIGNAGE**
 - 'E' Signs to be externally illuminated by adjacent emergency light point
 - 'FE' denotes as previous but illuminated as part of sign
 - 'RM' denotes non illuminated sign
 - FIRE DOOR SIGNS AND FIRE ACTION NOTICES**
 - Fire Action Notice
 - Emergency Floor Plan
 - "FIRE DOOR KEEP SHUT" sign
 - "FIRE DOOR KEEP LOCKED" sign
 - "AUTOMATIC FIRE DOOR KEEP CLEAR" or "FIRE EXIT KEEP CLEAR" sign
 - "CAUTION, IN THE EVENT OF FIRE DO NOT USE THIS LIFT" sign
 - DISTRIBUTION BOARD

- FIRE DOORS
- RISER DOORS

BROWNLEY COURT TENTH FLOOR

REV	DATE	AMENDMENTS

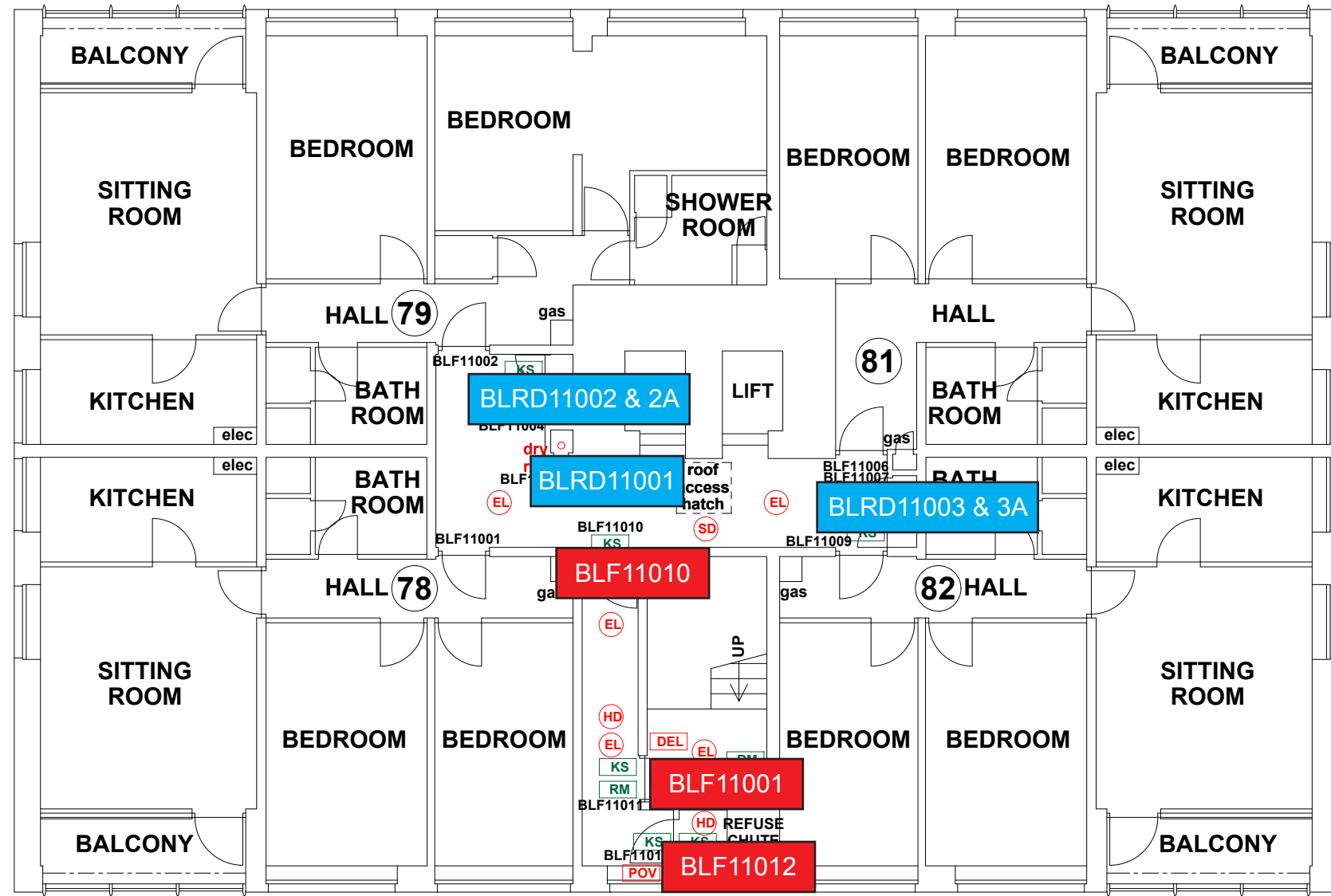
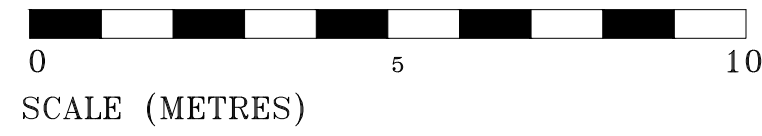
WEB: WWW.FIRNTEC.COM
EMAIL: CONTACTUS@FIRNTEC.COM
ADDRESS: 1ST FLOOR, ENDEAVOUR HOUSE, PARKWAY CT, PLYMOUTH PL6 8LR
TEL: 01752 977 147

PROJECT: BROWNLEY COURT
ADDRESS: BROWNLEY COURT
WYTHENSHAW
MANCHESTER
M22 8UD

DWG NO.: BR-C-220020-L11
DWG TITLE: LEVEL 10
DWG DATE: NOVEMBER 2022
DWG SIZE: SCALE 1:50 @ A1
DRAWN: NR | CHECKED: BR | DATE:

THIS DRAWING IS TO BE READ IN CONJUNCTION WITH ALL RELEVANT SPECIFICATIONS AND DRAWINGS ISSUED. THIS DRAWING IS CORRECT AT TIME OF SURVEY.

© COPYRIGHT FIRNTEC LTD 2022



- FIRE PRECAUTIONS LEGEND**
- ⊙ Break glass type fire alarm call point
 - HD Heat sensitive detectors
 - SD Smoke sensitive detectors
 - EL Emergency light point.
 - FS Firemans Switch
 - EDK Emergency Drop Key Access
 - FAP Fire alarm indicator / repeat panel
 - GD1 Door/Access fitted with Gerda D1 Key lock
 - FB1 Door/Access fitted with FB1 Key lock
 - FB2 Door/Access fitted with FB2 Key lock
 - FB4 Door/Access fitted with FB4 Key lock
 - FB11 Door/Access fitted with FB11 Padlock
 - FB14 Door/Access fitted with FB14 Padlock
 - DRO Dry Riser Outlet
 - DEL Digital electronic lock door entry/exit system
 - PIN Premises Information Box
 - POV Permanently Open Vent
 - AOV Automatic Opening Vent
 - OV Openable Vent
 - SA Fire alarm sounder ('X' indicates integral flashing - Xenon light)
 - CCTV CCTV Security Camera
 - FB Fire Brigade Key Access
 - EXTINGUISH**
 - BLN 1.1m x 1.1m fire blanket - base of container to be 1500mm above floor level
 - 6 litres AFFF aqueous foam extinguisher to BS:6575
 - 9 litre wet chemical type extinguisher
 - 4.5 litre dry powder type extinguisher
 - 2 kg carbon dioxide type extinguisher
 - 4.5 kg carbon dioxide type extinguisher
 - 9 kg water type extinguisher
 - 6 litre water type extinguisher
 - FIRE EXIT SIGNAGE**
 - E Signs to be externally illuminated by adjacent emergency light point
 - FE FE denotes as previous but illuminated as part of sign
 - RM RM denotes non illuminated sign
 - FIRE DOOR SIGNS AND FIRE ACTION NOTICES**
 - FAN Fire Action Notice
 - EFP Emergency Floor Plan
 - KS "FIRE DOOR KEEP SHUT" sign
 - KL "FIRE DOOR KEEP LOCKED" sign
 - KC "AUTOMATIC FIRE DOOR KEEP CLEAR" or "FIRE EXIT KEEP CLEAR" sign
 - LAN "CAUTION, IN THE EVENT OF FIRE DO NOT USE THIS LIFT"
 - DB DISTRIBUTION BOARD

FIRE DOORS

RISER DOORS

BROWNLEY COURT ELEVENTH FLOOR

REV	DATE	AMENDMENTS

WEB: WWW.FIRNTEC.COM
EMAIL: CONTACTUS@FIRNTEC.COM
ADDRESS: 1ST FLOOR, ENDEAVOUR HOUSE, PARKWAY CT, PLYMOUTH PL 6, PL6 8LR
TEL: 01752 977 147

PROJECT: BROWNLEY COURT

ADDRESS: BROWNLEY COURT
WYTHENSHAW
MANCHESTER
M22 8UD

DWG NO.: BR-C_220020_L12
DWG TITLE: LEVEL 11
DWG DATE: NOVEMBER 2022
DWG SIZE: SCALE 1:50 @ A1
DRAWN: NR | CHECKED: BR | RBL